

सामयिक निबन्ध - 61  
Occasional Paper - 61

भारत में कृषि ऋण की उत्पादकता  
कृषि पर संस्थागत ऋण की हाल में भूमिका का राज्य स्तरीय  
आंकड़े का उपयोग करते हुए मूल्यांकन  
**Productivity of Agricultural Credit in India**  
Assessing the Recent Role of Institutional Credit to  
Agriculture in India using State Level Data

---

सुधा नारायणन  
Sudha Narayanan

---



---

आर्थिक विश्लेषण और अनुसंधान विभाग  
Department of Economic Analysis and Research  
राष्ट्रीय कृषि और ग्रामीण विकास बैंक  
National Bank For Agriculture and Rural Development  
मुंबई  
Mumbai

---

2015

सामयिक निबन्ध - 61  
Occasional Paper - 61

भारत में कृषि ऋण की उत्पादकता  
कृषि पर संस्थागत ऋण की हाल में भूमिका का राज्य स्तरीय  
आंकड़े का उपयोग करते हुए मूल्यांकन  
**Productivity of Agricultural Credit in India**  
**Assessing the Recent Role of Institutional Credit to**  
**Agriculture in India using State Level Data**

---

सुधा नारायणन  
**Sudha Narayanan**

---



आर्थिक विश्लेषण और अनुसंधान विभाग  
Department of Economic Analysis and Research  
राष्ट्रीय कृषि और ग्रामीण विकास बैंक  
National Bank For Agriculture and Rural Development

मुंबई  
Mumbai

2015

**लेखक**  
**सुधा नारायणन**

**Author**  
**Sudha Narayanan**

पेपर में दिए गए तथ्यों और व्यक्त किए गए विचारों के लिए राष्ट्रीय बैंक उत्तरदायी नहीं है।

The usual disclaimer about the responsibility of the National Bank as to the facts cited and views expressed in the paper is implied.

---

राष्ट्रीय कृषि और ग्रामीण विकास बैंक  
आर्थिक विश्लेषण और अनुसंधान विभाग,  
चौथी मंजिल, 'सी' विंग, प्लॉट नं. सी-24  
'जी' ब्लॉक पो. बॉक्स नं. 8121  
बान्द्रा-कुर्ला कॉम्प्लेक्स, बान्द्रा (पूर्व)  
मुंबई - 400 051

National Bank for Agriculture and Rural Development  
Department of Economic Analysis and Research  
4th Floor, 'C' Wing, Plot No. C-24,  
G-Block, PB No. 8121,  
Bandra-Kurla Complex, Bandra (East)  
Mumbai - 400 051

राष्ट्रीय कृषि और ग्रामीण विकास बैंक, आर्थिक विश्लेषण और अनुसंधान विभाग, चौथी मंजिल, 'सी' विंग, प्लॉट नं. सी-24, 'जी' ब्लॉक पो. बॉक्स नं. 8121, बान्द्रा-कुर्ला कॉम्प्लेक्स, बान्द्रा (पूर्व), मुंबई - 400 051 द्वारा प्रकाशित.

Published by National Bank for Agriculture and Rural Development, Department of Economic Analysis and Research, 4th Floor, 'C' Wing, Plot No. C-24, G-Block, PB No. 8121, Bandra-Kurla Complex, Bandra (East), Mumbai - 400 051

---

ज्योती एंटरप्राइजेस, फोर्ट, मुंबई द्वारा मुद्रित  
Printed by Jyoti Enterprises, Fort, Mumbai-400 001. Tel. : 22632173

# Contents

---

LIST OF TABLES	iv
LIST OF FIGURES	iv
LIST OF APPENDIX	iv
FOREWARD	v
ACKNOWLEDGEMENT	vii
EXECUTIVE SUMMARY	ix
1. Introduction	1
2. Characterizing Agriculture and Institutional Credit since the 1990s	2
3. Empirical Evidence on the Productivity of Institutional Credit in India	8
4. Conceptualization of the Role of Formal Credit	9
5. Empirical Strategy	11
<i>a. The Challenges</i>	11
<i>b. Methodology</i>	13
<i>c. Data Sources</i>	14
<i>d. Scope and Limitations of the Study</i>	15
6. The Results	16
<i>a. The Productivity of Credit: Credit Elasticity of Agricultural GDP</i>	16
<i>b. Pathways of “productivity”: Input Demand and Credit Flow</i>	21
7. Concluding Remarks	24
REFERENCES	25
Appendix 1: Overview of GLC Flow during 2003-04 to 2013-14 - All India	27
Appendix 2: Empirical Strategy: The Methods Described	28
Appendix 3: Data and Sources	31
Appendix 4: Regression Results for SURE Model 3	33
Appendix 5: Results for Agricultural GDP as part of SURE Model 3	36

Appendix 6: Regional distribution of agriculture credit and real sector indicators	38
--	----

### **LIST OF TABLES**

Table 1: Summary Results of the three models	17
Table 2: State-wise Credit Elasticity of Agricultural GDP under the Lag Model	19
Table 3: Input Demand System: The Credit Elasticity of Input Demand from a SURE Model	23

### **LIST OF FIGURES**

Figure 1: Ratio of Institutional credit to the value of agricultural inputs	4
Figure 2: Source-wise Credit Disbursement	5
Figure 3: Trends in Mechanization	6
Figure 4: Labour use, draught animal and machine use in Indian agriculture	6
Figure 5: The Ratio of Agricultural GDP and Credit for major states (1996-2011)	7
Figure 6: Schematic Representation of Pathways	11
Figure 7: State-wise ratio of Agricultural Gross Domestic Product and Credit Flow (1996-2011)	20

### **LIST OF APPENDIX**

Appendix 1: Overview of GLC Flow during 2003-04 to 2013-14 - All India	27
Appendix 2: Empirical Strategy: The Methods Described	28
Appendix 3: Data and Sources	31
Appendix 4: Regression Results for SURE Model 3	33
Appendix 5: Results for Agricultural GDP as part of SURE Model 3	36
Appendix 6: Regional distribution of agriculture credit and real sector indicators	38

## Foreword

For policymakers, a vexing issue in recent times, with respect to the agriculture sector, has been to ascertain in a measurable form, how and by how much, agricultural output responds to increases in agriculture credit. Prima facie, this does not appear to be a difficult question to answer; but scratching the surface would reveal the challenges in undertaking such an exercise. Agriculture credit serves as an intermediate input and does not directly enter as an input into agricultural production. It acts as an enabling input and plays a complex role in farmers' production decisions, unlike physical inputs that have a more transparent relationship with the levels of output. This study, which is a collaborative effort between NABARD and IGIDR, Mumbai, was undertaken to assess the impact of agricultural credit on agricultural production, delineate the pathways through which credit is influencing agriculture output, and assess the productivity of agriculture credit.

From the standpoint of policy making, the study has been able to highlight the increasing role that agriculture credit is playing in supporting agriculture production in recent times- credit accounted for 16% of the total value of paid out inputs in the triennium ending (TE) 1998-99, and by the end of the decade, in TE 2011-12, it had risen to as high as 80.3% of the total paid out costs of inputs. Based on a State level panel data, the study has estimated the credit elasticity of agricultural GDP for the period 1995-96 to 2011-12 at 0.21, i.e. a 10% increase in institutional credit flow to agriculture in current prices is associated with a 2.1% increase in agricultural GDP the following year, expressed in current prices. However, disaggregating the period into two i.e., 1995-96 to 2003-04 and 2004-05 to 2011-12 indicates that the elasticity has weakened in the latter period in comparison to the former.

An important finding of the study suggests that the inputs are highly responsive to an increase in institutional credit to agriculture (after controlling for input prices, output prices, sectoral composition of agriculture, area sown and so on). A 10 % increase in credit flow in nominal terms, leads to an increase by 1.7% in fertilizers (N, P, K) consumption in physical quantities and 5.1% increase in the tonnes of pesticides. This indicates that agriculture credit has been able to positively influence the inputs that go into agriculture production. Thus agriculture credit is able to deliver, to a fair extent, the envisaged role as an enabling input.

In a nutshell, the study has filled a critical policy gap of recent times, by assessing the productivity of agriculture credit, and has contributed to the literature on agriculture credit.

I am sure the findings of the study will be useful for all those who are engaged with agriculture credit- the policy makers, banks, apex institutions like RBI and NABARD and the research community.

National Bank for Agriculture  
and Rural Development  
Mumbai

**Dr. Harsh Kumar Bhanwala**  
Chairman

## प्रस्तावना

नीति निर्माताओं के लिए, हाल के दिनों में, कृषि क्षेत्र के संबंध में, कृषि ऋण में वृद्धि करने से कृषि उत्पादन में होने वाली वृद्धि कैसे और कितनी होगी, इसे मापने को सुनिश्चित करने की एक चुनौती रही है, प्रथम दृष्टया इस प्रश्न का उत्तर कठिन प्रतीत नहीं होता है परन्तु धरातल पर इस प्रकार का कार्य करना एक बड़ी चुनौती है। कृषि ऋण अंतस्थ निविष्टि के रूप में कार्य करता है और कृषि उत्पादन में प्रत्यक्ष निविष्टि के रूप में कार्य नहीं करता है। यह सहायक निविष्टि के रूप में कार्य करता है, किसानों के उत्पादन निर्णय में समष्टि भूमिका निभाता है, भौतिक निविष्टि की तरह, जिसका उत्पादन स्तर से अधिक पारदर्शी संबंध होता है और कृषि उत्पादनों को प्रत्यक्ष रूप से प्रभावित नहीं करता है। यह अध्ययन जो नाबार्ड और आईजीआईडीआर, मुंबई के बीच मिलानुला प्रयास है, जो कृषि उत्पादन पर कृषि ऋण के प्रभाव का मूल्यांकन करने, पथ का निरूपण, जिसके माध्यम से ऋण कृषि उत्पादन को प्रभावित करता है, और कृषि ऋण की उत्पादकता का मूल्यांकन करता है, के लिए किया गया था।

नीति निर्माण की दृष्टि से, इस अध्ययन में हाल के समय में कृषि उत्पादन में सहायता के लिए कृषि ऋण की बढ़ती भूमिका पर प्रकाश डाला गया है, जो 1998-99 में समाप्त होने वाली त्रिवर्ष में भुगतान किए गए निविष्टियों के कुल मूल्य का 16% ऋण बनता है, और दशक के अंत तक, त्रिवर्ष 2011-12 के अंत में, यह बढ़कर निविष्टि की कुल लागत का 80.3% तक हो गया था। राज्य स्तरीय पैनल आंकड़े के आधार पर, अध्ययन में 1995-96 से 2011-12 की अवधि के लिए कृषि सकल घरेलू उत्पाद की ऋण मूल सापेक्षता का अनुमान 0.21 अर्थात् चालू मूल्य में कृषि के संस्थागत ऋण प्रवाह में वृद्धि 10% है जो परवर्ती वर्ष के कृषि घरेलू उत्पाद में 2.1% वृद्धि से संबंधित है जिसे चालू मूल्य के रूप में दिखाया गया है, तथापि, उक्त अवधि को दो भागों अर्थात् 1995-96 से 2003-04 और 2004-05 से 2011-12 में बांटा गया है जो यह बताता है कि पहले की अवधि की तुलना में बाद की अवधि में मूल्य सापेक्षता में कमी हुई।

इस अध्ययन का एक महत्वपूर्ण निष्कर्ष से यह संकेत मिलता है कि कृषि में ऋण में वृद्धि के लिए निविष्टियां बहुत हद तक जिम्मेदार होती हैं (निविष्टि मूल्य को नियंत्रित करने के बाद, उत्पादन मूल्य, कृषि की क्षेत्रवार रचना, बुआई क्षेत्र एवं तारीख) ऋण प्रवाह में मात्र 10% की वृद्धि से उर्वरकों के उपभोग (एनपीके) में 1.7% की वृद्धि, और कीटनाशकों में टनों में 5.1% की वृद्धि होती है, इससे पता चलता है कि कृषि ऋण निविष्टियों को सकारात्मक रूप से प्रभावित करने में सक्षम रहा है जिसे कृषि उत्पादन पर प्रभाव पड़ता है। अतः कृषि ऋण को एक प्रभावी निविष्टि की भूमिका के रूप में, उचित सीमा तक माना जा सकता है।

संक्षिप्त में, इस अध्ययन में हाल के समय में महत्वपूर्ण नीतिगत अंतराल को, कृषि ऋण की उत्पादकता का मूल्यांकन कर, पाटा गया है और कृषि पर उपलब्ध साहित्य में यह एक योगदान है। मुझे विश्वास है कि इस अध्ययन का निष्कर्ष कृषि ऋण से संबंधितों यथा नीति निर्माताओं, बैंको, भारतीय रिज़र्व बैंक और नाबार्ड जैसी शीर्ष संस्थाओं तथा अनुसंधान समुदाय के लिए उपयोगी होगा।

राष्ट्रीयकृषि और ग्रामिण विकास बैंक  
मुंबई

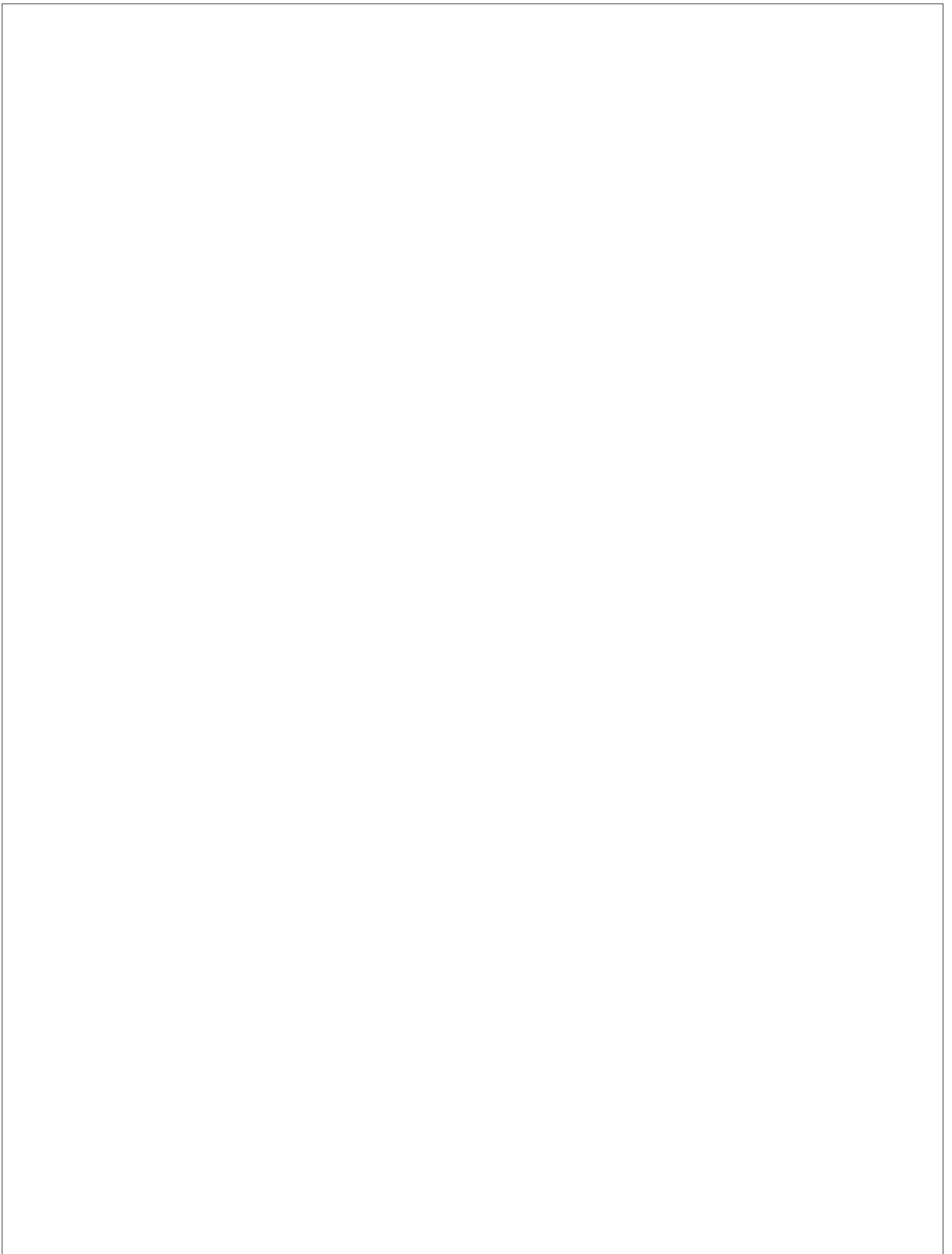
डॉ. हर्ष कुमार भनवाला  
अध्यक्ष

## **ACKNOWLEDGEMENT**

This study was funded by the Research and Development (R&D) Fund of the Department of Economic Analysis and Research (DEAR), NABARD. I thank Dr. Harsh Kumar Bhanwala, Chairman, NABARD, Dr. Prakash Bakshi, Former Chairman, NABARD, Dr. R. N. Kulkarni, Dr. M. V. Ashok, Dr. Satyasai and the DEAR team at NABARD and Dr. S. Mahendra Dev for their support advice and inputs at various stages of this work. Garima Dhir provided valuable research assistance. Andaleeb Rahman, Krushna Ranaware, Sowmya Dhanraj, Sanjay Prasad, Sumit Mishra and others assisted in putting together the dataset used for this study. This work has benefitted immensely from Nirupam Mehrotra's inputs and insights into the various issues relating to the role of credit in Indian agriculture. I also thank all the participants of seminars on July 4, 2013 and November 14, 2014 at DEAR, NABARD and Pallavi Chavan of the RBI. A number of their suggestions have been incorporated in this paper. All remaining errors and omissions are however mine.

**Sudha Narayanan**





## EXECUTIVE SUMMARY

Amongst recent policy interventions implemented to revive the languishing agricultural sector in India, those pertaining to agricultural credit have been very much in the forefront. In particular, three major policy initiatives have shaped the past decade in institutional credit to agriculture. The policy of doubling of institutional credit to agriculture between 2004-05 and 2006-07 (over the 2004-05 base year) marked the first attempt to alleviate the financial constraints of farmers. In 2008-09, the Agricultural Debt Waiver and Debt Relief Scheme (ADWDRS) was introduced to waive specific outstanding debts for a large number of small farmers; this was followed by the interest subvention scheme, that sought to remedy the perceived negative impact of the waiver on loan repayment culture by rewarding timely repayment with loans carrying lower interest rates. These three schemes combined have, implicitly and explicitly, resulted in an increasing volume of institutional credit to agriculture. Whereas credit accounted for only 16% of the total value of paid out inputs in the triennium ending (TE) 1998-99, and 26.3% in TE 2003-04, by the end of the decade, in TE 2011-12, it had risen to as high as 80.3% of the estimated total paid out costs of inputs.

Despite its importance, little is known about the effectiveness of credit in supporting agricultural growth as represented by the GDP and indeed the very nature of the relationship between formal agricultural credit and agricultural GDP. This research project is a modest effort in this direction. While acknowledging that questions of the impact of credit on agricultural output or value addition or productivity are best addressed through a textured understanding of household behaviour and micro studies, this study is based on the premise that aggregate secondary data too can reveal some of these important relationships. This study uses state-level data to examine the relationship between institutional credit to the agricultural sector and agricultural GDP at the national level. Despite serious

limitations of aggregation, which typically disregards distributional issues and often masks more than it reveals, it is also true that any systematic or pervasive relationship should reflect in aggregate data and offers a level of generalization not available in small scale surveys. The goal of this study is four-fold: How productive is institutional credit to the agricultural sector? What has been the trend since mid-1990s? What are the pathways through which credit impacts agriculture? How, if at all, have these pathways changed over the years? The analysis covers the period 1995-96 to 2011-12 using data that includes all major states within India. The study also conducts, data permitting, a disaggregate analysis of two sub-periods – the first phase denoting the Pre-doubling period (1995-96 to 2003-04) and the second representing the Post-doubling period (2004-05 to 2011-12). Where feasible, the study replicates the analysis at the state level.

In this study, credit is conceptualized as an enabling input that influences agricultural GDP primarily via use of variable inputs and through investments in fixed capital that support agricultural production. To the extent that credit can also contribute to consumption smoothing of borrowers or better their capacity for risk bearing, credit could have a non-specific influence on agricultural GDP via variables that are typically unobserved by the researchers. To parse this complex relationship given the limitations of data, a combination of three approaches are used. The first is a simple model that regresses agricultural GDP on current credit flow using state level data. The second method estimates a hybrid profit-production function that regresses agricultural GDP on a vector of relevant inputs, prices and agricultural credit flow during that year. This is a direct approach to estimating the relationship between credit and agricultural GDP in reduced form. The possible indigeneity of credit is addressed by the use of a control function that “controls” for the estimated endogenous component of observed credit flow. The third method represents the ‘pathways approach’ which estimates input demand as a function of credit, among other things and controlling for indigeneity. The coefficients representing the responsiveness of

input use to institutional credit are then used as components to construct the total impact of agricultural credit on agricultural GDP. The impact of credit on agricultural output is thus derived as the sum of the contribution of credit to the use of specific inputs, capital or the cropping pattern, weighted by the contribution of these to the total value of agricultural production.

The range of estimates obtained from the various methods suggest that the credit elasticity of agricultural GDP for the entire period 1995-96 to 2011-12 is 0.21, i.e. a 10% increase in institutional credit flow to agriculture in current prices is associated with a 2.1% increase in agricultural GDP the following year expressed in current prices. When controlling for prices represented by the wholesale price index, a 10% increase in nominal credit associated with a 0.97% increase in real GDP, indicating that inflation might be eroding some of gains made in nominal terms. Compared with these results in the simple one period lag model (method 1), the estimated credit elasticity is 0.04 when the model controls for the use of inputs and a vector of input and output prices and for the possible indigeneity of credit through a control function approach (method 2). The structural model incorporating the pathways through which credit influences agricultural GDP (method 3) yields estimates of credit elasticity of 0.21. These results however have weak statistical significance.

The results from a period-wise disaggregate analysis is less conclusive. While the first model suggests that the elasticity continues to be statistically significant but has weakened in the post-doubling period, the other two approaches, one that controls for prices and input and the other the captures the pathways suggest that the relationship between credit and agricultural GDP may have declined, but none of the estimated credit elasticity coefficients are statistically significant implying that the hypothesis that the credit has no association with agricultural GDP cannot be rejected.

At the state level, estimates of credit elasticity of agricultural GDP from a simple one-period lag model, the only feasible option given the data, vary mostly between 0.05 and 0.7. For only a few exceptions, the credit elasticity turned out to be statistically insignificant. Further, at the state level, the time trend of elasticity estimates varies across states. In some states the relationship appears to have strengthened post doubling whereas for others it has weakened. Further clarity and insight can only be obtained through detailed case studies or primary surveys, owing to the paucity of state level data that precludes modelling efforts at the state level.

This study goes beyond to understand the precise role of credit, in other words, the pathways through which it influences or is associated with agricultural GDP. The findings from the analysis suggest that all the inputs, are highly responsive to an increase in institutional credit to agriculture, after controlling for input prices, output prices, sectoral composition of agriculture, area sown and so on. A 10 % increase in credit flow in nominal terms leads to an increase by 1.7% in fertilizers (N, P, K) consumption in physical quantities, 5.1% increase in the tonnes of pesticides, 10.8% increase in tractor purchases. The credit elasticity of new pump sets energized is however not statistically significant. A disaggregate analysis, for the pre-doubling and post-doubling phases, suggest that the relative importance of the inputs have changed. Whereas in the pre-doubling phase, fertilizers were statistically significantly responsive, in the post-doubling phase credit appears to have a strong relationship with tractors.

Overall, it seems quite clear that input use is sensitive to credit flow, whereas GDP of agriculture is not. This seems to indicate that the ability of credit to engineer growth in agricultural GDP is impeded by a problem of productivity and efficiency where the increase in input use and adjustments in the pattern of input use are not (yet) translating into higher agricultural GDP. Credit seems therefore to be an enabling input, but one whose effectiveness is undermined by low technical efficiency and productivity.

## कार्यपालक सारांश

भारत में पिछड़ रही कृषि क्षेत्र का पुनरुत्थान करने के लिए हाल के समय में किए गए नीतिगत हस्तक्षेपों में से कृषि ऋण से संबंधित नीतियां सबसे प्रमुख रही हैं। विशेष रूप से, पिछले दशक में कृषि के लिए संस्थागत ऋण के संदर्भ में प्रमुख तीन नीतियां बनाई गईं। 2004-05 और 2006-07 (आधार वर्ष 2004-05 पर) के बीच कृषि के लिए संस्थागत ऋण के दुगुना करने की नीति किसानों की वित्तीय कठिनाइयों को कम करने की दिशा में प्रथम प्रयास था। 2008-09 में कृषि ऋण माफी और ऋण राहत योजना (एडीडब्लूडीआरएस) बहुत बड़ी संख्या में छोटे किसानों के बकाए ऋण को माफ करने के लिए शुरू की गई। इसके बाद ब्याज सहायता (सबवेंशन) योजना शुरू की गई जिसका उद्देश्य ऋण की समय से चुकौती को बढ़वा देने के लिए न्यूज ब्याज दर के रूप में पुरस्कार स्वरूप ऋण चुकौती संस्कृति पर ऋण माफी के प्रभाव को कम करना था। इन तीनों योजनाओं के सम्मिलित अंतर्निहित एवं बहिर्निहित परिणाम स्वरूप कृषि के लिए संस्थागत ऋणों की प्रमात्रा में वृद्धि हुई। जबकि ऋण 1998-99 को समाप्त होने वाले त्रिवर्ष में निविष्टियों के कुल भुगतान मूल्य का 16% था और त्रिवर्ष 2003-04 में 26.3% था जो दशक के अंत तक, त्रिवर्ष 2011-12 में बढ़कर निविष्टियों के अनुमानित कुल लागत का 80.3% हो गया।

इसके महत्वपूर्ण होने के बावजूद, कृषि विकास में ऋण की प्रभावशीलता, जिसे जीडीपी के रूप में प्रस्तुत किया जा सके तथा औपचारिक कृषि ऋण और कृषि जीडीपी के बीच संबंधों के स्वरूप के बारे में बहुत कम जानकारी है। यह अनुसंधान परियोजना इस दिशा में एक सार्थक प्रयास है। परिवार की अपेक्षाओं और सूक्ष्म अध्ययनों से मिले अनुभवों को समझकर कृषि उत्पादन या मूल्य संवर्धन या उत्पादकता पर कृषि ऋण के प्रभाव के प्रश्नों को अच्छी तरह समझा जा सकता है। यह अध्ययन इस तर्क पर आधारित है कि सकल द्वितीयक आंकड़ों से भी इन महत्वपूर्ण परिणामों को समझा जा सकता है। इस अध्ययन में कृषि क्षेत्र के संस्थागत ऋण और राष्ट्रीय स्तर पर कृषि जीडीपी के संबंध की जांच करने के लिए राज्य स्तरीय आंकड़ों की उपयोग किया गया है। समुच्चयन जिसमें संवितरण संबंधी मामलों पर विशेष रूप से ध्यान दिया जाता है और इसमें कभी-कभी जितान प्रकट होता है उससे अधिक अप्रकट रह जाता है, इस गंभीर कमी के बावजूद, प्रणालीगत अथवा व्यापक संबंध समय आंकड़ों से ज्ञात होने चाहिए और छोटे स्तर पर किए गए सर्वेक्षणों में उभर कर न आ सकने वाले सामान्य निष्कर्ष इससे प्रकट होने चाहिए। इस अध्ययन का उद्देश्य चार स्तरीय है: कृषि क्षेत्र के लिए संस्थागत ऋण कितना लाभप्रद है? 1990 के मध्य से किस तरह की प्रगति रही है?

वह कौन सा रास्ता है जिसके माध्यम से ऋण कृषि को प्रभावित करता है ? कैसे इन सभी ने वर्षों में अपने पथ बदल लिया है ? इस विश्लेषण में 1995-96 से 2011-12 की अवधि के आंकड़ों को शामिल किया गया है इसमें भारत के सभी प्रमुख राज्य शामिल हैं । जिसमें आंकड़े स्वीकरण, दो उप-अवधियों के विभिन्न विश्लेषणों का अध्ययन किया गया है - प्रथम चरण ऋण दुगुना करने की अवधि से पहले (1995-96 से 2003-04) और दूसरा चरण ऋण दुगुना करने के बाद की अवधि (2004-05 से 2011-12) को इंगित करता है । जहां संभव है इस अध्ययन में राज्य स्तर पर विश्लेषणों को दुबारा उपयोग में लाया गया है ।

इस अध्ययन में, ऋण को एक प्रभावी निविष्टि माना गया है जो परिवर्तनशील निविष्टियों के उपयोग के माध्यम से प्रथमतः और अचल पूंजी में निवेश के माध्यम से कृषि जीडीपी को प्रभावित करता है जे कृषि उत्पादन में सहायता करता है । एक सीमा तक ऋण ऋणकर्ताओं को उपयोग अपेक्षाओं में भी मदद करता है य जोखिम वहन की उनकी क्षमता को बेहतर बनाता है, परिवर्तनशील निविष्टियों के माध्यम से कृषि जीडीपी पर गैर-विशिष्ट प्रभाव डाल सकता है जिन पर अनुसंधानकर्ताओं ने विशेष रूप से ध्यान न दिया हो । आंकड़ों की दी गई सीमा में इम जटिल संबंधों की पदव्याख्या करने के लिए तीन दृष्टिकोणों के संमिश्रण का उपयोग किया गया है । प्रथम एक सामान्य मॉडल है जिसमें राज्य स्तर के आंकड़े का उपयोग किया गया है जिसमें वर्तमान ऋण प्रवाह कृषि जीडीपी प्रत्यागमन करता है । दूसरा मॉडल संकर लाभ-उत्पादन कार्य का आकलन करता है जो वर्ष के दौरान संबंधित निविष्टियों मूल्यों और कृषि ऋण प्रवाह के संचालन पर कृषि जीडीपी प्रत्यागमन करता है । यह कमतर रूप में ऋण और कृषि जीडीपी के संबंध के अनुमान लगाने का प्रत्यक्ष दृष्टिकोण है । नियंत्रण कार्य, जो प्रेक्षित ऋण प्रवाह की अनुमानित अंतर्जातीयता को “नियंत्रित” करता है, के लिए नियंत्रण कार्य का उपयोग कर ऋण की संभाव्य अंतर्जातीयता का निवारण करता है । तीसरी विधि अन्वेषक दृष्टिकोण है जो अन्य बातों के साथ-साथ निविष्टि मांग को ऋण के प्रयोजन रूप में आकलित करती है और अंतर्जातीयता को नियंत्रित करता है । संस्थागत ऋण जिनके निविष्टि उपयोग के प्रत्योत्तरनीयता का प्रतिनिधित्व करने वाला गुणांक का उपयोग कृषि जीडीपी पर कृषि ऋण के कुल प्रभाव का निर्माण करने के लिए घटक के रूप में किया जाता है । इस तरह कृषि निविष्टि पर ऋण का प्रभाव विशिष्ट निविष्टि, पूंजी या सस्यन प्रणाली के उपयोग के लिए ऋण का कुल अंशदान बनता है जो कृषि उत्पादन की कुल मूल्य में इनके अंशदान में भारित है ।

विभिन्न प्रविधियों से प्राप्त अनुमानों के आधार पर यह पता चलता है कि संपूर्ण अवधि 1995-96 से 2011-12 के लिए कृषि जीडीपी में ऋण लोच 0.21% है अर्थात् कृषि जीडीपी में 2.1% की वृद्धि वर्तमान

मूलों में कृषि को संस्थागत ऋण प्रवाह में 10% की वृद्धि परवर्ती वर्ष में वर्तमान मूलों में दर्शाई गई है। थोक मूल्य सूचकांक के द्वारा बताए गए मूल्यों को नियंत्रित करने के लिए वास्तविक जीडीपी में 0.97% की वृद्धि से संबंधित सामान्य ऋण में 10% की वृद्धि, यह दर्शाता है कि सामान्य स्थिति में लाभ का कुछ, अंश मुद्रा स्फीति क्षरित कर रही है। सामान्य एक अवधि लैंग मॉडल (प्रविधि 1) में इन परिणामों की तुलना करने से एक अनुमानित ऋण लोच 0.04 होती है जबकि निविष्टियों के उपयोग और निविष्टि एवं उत्पादन मूल्य के वेक्टर मॉडल नियंत्रण कंट्रोल फंक्शन एप्रोच के माध्यम से ऋण की मॉडल संभव अंतर्जातीयता के लिए है (प्रविधि 2). संरचनात्मक मॉडल जो रास्ता तैयार करती है जिनके माध्यम से ऋण कृषि जीडीपी (प्रविधि 3) उत्पादन अनुमान का ऋण लोच 0.21 है। तथापि इन परिणामों का सांख्यिकीय महत्व कम है।

अवधि-वार विभिन्न विश्लेषण से मिले परिणाम पूरी तरह निर्णयात्मक नहीं है। जहां प्रथम मॉडल बताता है कि लोच सांख्यिकीय रूप से महत्वपूर्ण बना हुआ है परंतु ऋण दुगुना करने की अवधि के उपरांत कमजोर हुआ है, अन्य दो दृष्टिकोण एक जो मूल्य और निविष्टि को नियंत्रित करता है तथा अन्य जो पथ अभिग्रहित करता है, बताता है कि ऋण और कृषि जीडीपी के बीच संबंध में गिरावट आई है परंतु इनमेंसे कोई भी अनुमानित ऋण लोच गुणांक सांख्यिकीय रूप से महत्वपूर्ण नहीं है। इसका अर्थ यह हुआ कि 'ऋण का कृषि जीडीपी से कोई संबंध नहीं है' यह परिकल्पना को नकारा नहीं किया जा सकता है।

राज्य स्तर पर, सामान्य एक अवधि लैंग मॉडल से कृषि जीडीपी ऋण लोच की अनुमान दिया गया केवल एक विकल्प डाटासहित, अधिकांशतः 0.05 और 0.7 के बीच रहता है, कुछ अपवादों को छोड़कर, ऋण लोच सांख्यिकीय रूप से महत्वपूर्ण है। इसके अतिरिक्त, राज्य स्तर पर, लोच अनुमान की समय प्रवृत्ति भिन्न-भिन्न राज्यों में अलग-अलग है। कुछ राज्यों में ऋण दुगुना करने की अवधि के बाद संबंध मजबूत हुए हैं जबकि अन्य राज्यों में कमजोर हुए हैं। इसके अतिरिक्त, विस्तृत मामले अध्ययन या प्राथमिक सर्वेक्षण, राज्य स्तरीय आंकड़ों की कमी को ध्यान में रखते हुए जो राज्य स्तर पर मॉडलिंग प्रयासों को कठिन बना देता है, के माध्यम से देखा जा सकता है।

यह अध्ययन ऋण की संक्षिप्त भूमिका को समझने से आगे जाता है, अन्य शब्दों में, पथ जिसके माध्यम से यह कृषि जीडीपी को प्रभाषी या सहायता प्रदान करता है। विश्लेषण के निष्कर्षों से पता चलता है कि निविष्टि मूल्य, उत्पादन मूल्य कृषि का क्षेत्रवार संगठन, बुआई क्षेत्र और अन्य नियंत्रित करने के बाद, कृषि में संस्थागत ऋण की वृद्धि सभी निविष्टियों को प्रभावित करती है। सामान्य रूप में कृषि ऋण में 10% की वृद्धि से उर्वरकों



(एनपीके) भौतिक प्रमात्रा के उपभोग में 1.7% टनों में कीटकनाशकों के उपयोग में 5.1% की वृद्धि, ट्रैक्टर की खरीद में 10.8% की वृद्धि होती है। तथापि नए पंप सेटों की ऋण लोच सांख्यिकीय दृष्टि से क्रियाशील नहीं है। ऋण दुगुना करने की अवधि के पहले और दुगुना करने की अवधि के बाद के चरणों के विभिन्न विश्लेषणों से पता चलता है कि निविष्टियों के सापेक्ष महत्व में परिवर्तन हुआ है। जबकि ऋण की द्विगुनीकरण चरण में उर्वरकों का सांख्यिकीय रूप से महत्वपूर्ण प्रभाव था। द्विगुणीकरणोत्तर चरण में ऋण की ट्रैक्टरों से सबल संबंध रहा है।

अंततः यह स्पष्ट है कि निविष्टियों का उपयोग ऋण प्रवाह हे लिए संवेदनशील है, जबकि कृषि जीडीपी के लिए ऐसा नहीं है। इससे ऐसा प्रतीत होता है कि कृषि जीडीपी में वृद्धि करने की ऋण की क्षमता में उत्पादकता और क्षमता की समस्या एक प्रमुख बाधक कारक है जबकि निविष्टि के उपयोग में वृद्धि और निविष्टि के उपयोग के पैटर्न में समायोजन से उच्च कृषि जीडीपी प्राप्त नहीं हो रही है। अतः ऋण एक सहायक निविष्टि है परंतु निम्न तकनीकी क्षमता और उत्पादकता के कारण उसका प्रभाव हो रहा है।

# Productivity of Agricultural Credit in India

---

## 1. Introduction

The decades since 1990 have been challenging times for Indian agriculture. Growth rates of agricultural Gross Domestic Product (GDP) have been languishing and the traditional crop sectors have seen declining profitability. This has pushed policy makers to direct special attention to addressing some of the pressing concerns confronting Indian agriculture. Institutional credit has been an important lever in this effort. Indeed, as many as three major policy initiatives focussed on institutional credit have been implemented since 2000 to bolster the agricultural sector. The first policy initiative, introduced in 2004-05, was to double the volume of credit to agriculture over a period of three years (to 2006-07), relative to the 2004-05 base to expand the reach of formal finance. Close on its heels came the Agricultural Debt Waiver and Debt Relief Scheme (ADWDRS) 2008, in response to the persistent problem of indebtedness and to alleviate financial pressures faced by the farmers. The interest rate subvention was then introduced in 2010-11 with the stated goal of providing incentives for prompt repayment of loans, partly to address the perceived fallout of the ADWDRS, that it had somehow vitiated the repayment culture. All three measures have contributed, both explicitly and implicitly, to burgeoning institutional lending to agriculture in the last decade.<sup>1</sup>

Despite the significance of these interventions, very little is known regarding the outcomes, in particular, whether institutional credit has had the intended impact on agricultural growth. Existing commentaries focussing on this period point out the poor correlation between the two (Chavan and Ramakumar, 2007 for example). In this context, this research project aims to understand the extent to which, if at all, growing institutional credit to agriculture supports growth in the sector. What is its precise role and through what pathways does it support agriculture? These questions assume particular significance in the context of recent speculation that agricultural credit might not entirely flow to agriculture or and that there is a significant spillover to other

---

<sup>1</sup> There is evidence to suggest that the institutional lending to agriculture might have picked up since 2000, even before the doubling of credit in 2004-05 (Chavan and Ramakumar, 2007).

sectors (Chavan, 2009; Burgess and Pande, 2005 and Binswanger and Khandker, 1992). Some ask if formal credit a 'sensible' way to support agriculture in India. While answers to this question are perhaps addressed best through detailed micro studies, it is also possible to elicit patterns and relationships between agricultural credit and agricultural GDP using secondary data. This study uses secondary data to examine four specific questions: How productive is institutional credit to the agricultural sector? What has been the trend since mid-1990s? What are the pathways through which credit impacts agriculture? How, if at all, have these pathways changed over the years? Using detailed state level data for the period 1995-2012, we analyse the possible impact of credit on agricultural GDP using multiple methods, using a control function approach. We also analyse the potential pathways through which institutional credit can influence agricultural growth, focussing on the responsiveness of input demand to institutional credit flow in some detail. An aggregate analysis of this nature necessarily has severe limitations and needs to be interpreted with care but can serve to complement our understanding of the productivity of agricultural credit in India.

The paper is organized as follows. The following section (Section 2) provides the context of agriculture and credit in recent times, underscoring the motivation for this study. Section 3 reviews the empirical evidence on the productivity of rural credit in India, focussing on secondary data analysis at the aggregate level (state or national). Section 4 provides a conceptual framework for the present analysis. Section 5 then discusses the empirical strategies adopted in this work to tackle some inherent econometric issues that pose problems for establishing a causal relationship between credit and agricultural GDP. The section discusses the data used for the analysis and also outlines the scope and limitations of these approaches. Section 6 is devoted to the results from the econometric exercise and discusses the findings at length. The concluding section 7 closes with some remarks on the study and the way forward.

## **2. Characterizing Agriculture and Institutional Credit since the 1990s.**

Both the structure of agriculture and the nature of institutional credit have been undergoing a rapid change since the 1990s but became especially pronounced since 2000. Initiatives to expand the reach of formal credit have been a goal

pursued consistently in the past mainly by designating agriculture as a priority sector for lending. The introduction of schemes such as the Kisan Credit Card (KCC) scheme in 1998-99 aimed to provide farmers with adequate and timely credit support from the banking system for agriculture and allied activities in a flexible and cost-effective manner.

Three major policy initiatives in recent years have come to define the context of institutional credit to agriculture in India, as outlined in the introduction. The first policy introduced in 2004 sought to double the volume of agricultural credit relative to what it was in 2004-05, over a period of three years. Since then, the actual credit flow has consistently exceeded the target (Government of India, 2012). Against a credit flow target of Rs.3,25,000 crore during 2009-10, the achievement was Rs.3,84,514 crore, forming 118 percent of the target. The target for 2010-11 was Rs.3,75,000 crore while the achievement on March, 2011 is Rs.4,46,779 crore (Government of India, 2013). A second policy involved the waiving of agricultural debt for small farmers and an opportunity for one time settlement for others.<sup>2</sup> Close on its heels, an interest subvention scheme was introduced to reward prompt repayment of loans, widely perceived has having been vitiated by the debt waiver scheme. Under the existing interest subvention scheme, farmers get short-term crop loans at seven per cent interest. If the loan to the bank is promptly paid then the effective rate of interest to the farmer works out to four per cent a year due to the additional interest subvention.<sup>3</sup> Interest subvention scheme for short-term crop loans to be continued scheme extended for crop loans borrowed from private sector scheduled commercial banks. Together, these interventions have both explicitly and implicitly transferred large amounts to the agricultural sector. Although the increasing trend of institutional credit flow might have begun in 2000 itself (Ramakumar and Chavan, 2007), credit flow in recent years have stood out for its magnitude, if not for reversing the trend of the 1990s.

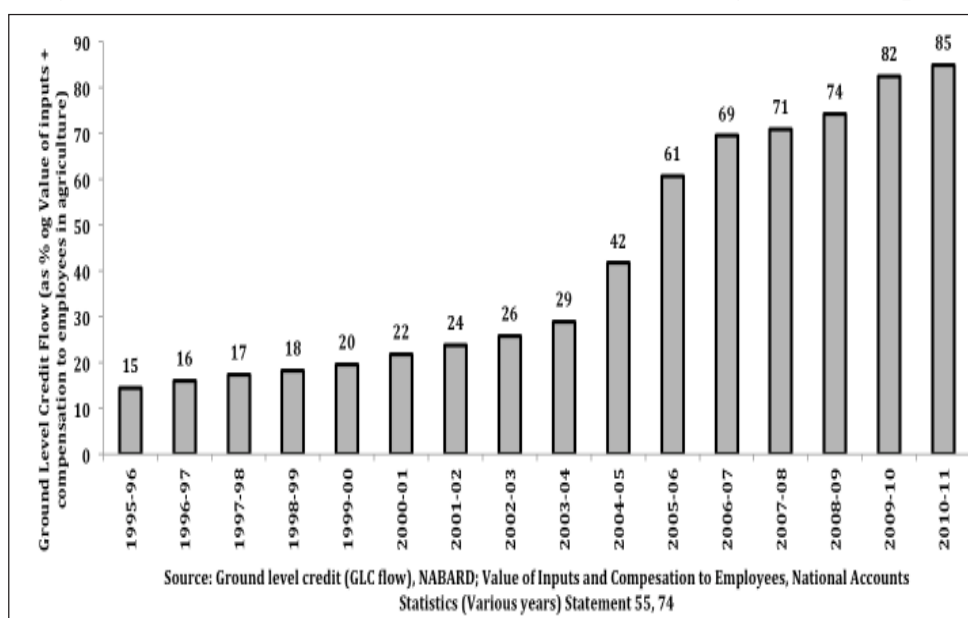
---

<sup>2</sup> As per the provisional figures, a total of 3.01 crore small and marginal farmers and 67 lakh 'other farmers' have benefited from the Scheme involving debt waiver and debt relief of Rs.65,318.33 crore (Government of India, 2013).

<sup>3</sup> From kharif 2006-07, farmers are receiving crop loans up to a principal amount of 3 lakh at 7% rate of interest. In the year 2009-10, Government provided an additional 1% interest subvention to those farmers who repaid their short term crop loans as per schedule. This subvention for timely repayment of crop loans was raised from 1% to 2% in 2010-11, further 3% from the year 2011-12. Thus the effective rate of interest for such farmers will be 4 % p.a. (Government of India, 2013).

For example, ground level credit flow as a ratio of the total value of paid out inputs in agriculture and allied sector has increased from an average of 21% in 1995-96 to 2003-04 to 69% during the period 2004-05 to 2011-12 (See Appendix 1 for growth in the number of accounts). As of 2011-12, institutional credit is equal to 85% of paid out inputs. If all institutional agricultural credit were directed to inputs, this increasing share is suggestive of credit outstripping the increasing costs and perhaps crowding out informal borrowing in the aggregate. However, in reality given the fungibility of credit, this is not self-evident.

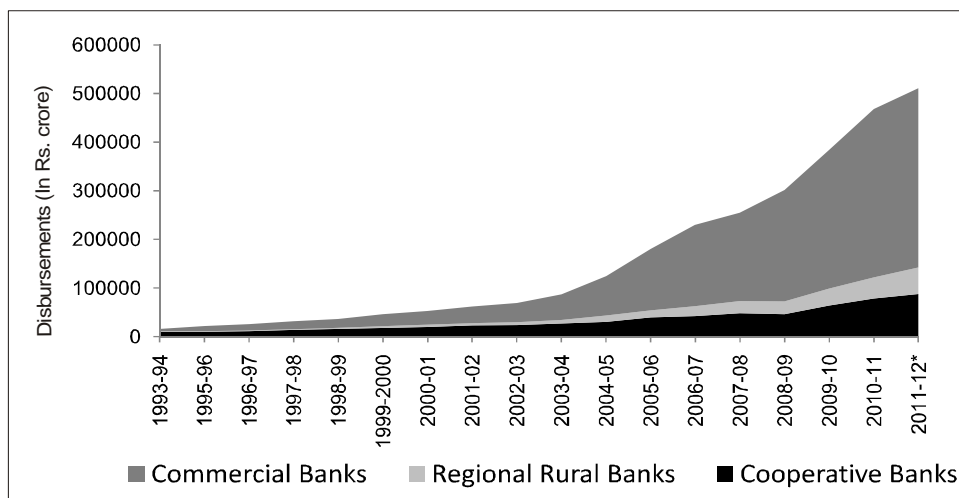
**Figure 1 : Ratio of institutional credit to the value of agricultural inputs**



Alongside the significant increase in the total credit flow into agriculture, the nature and source of credit have also seen significant shifts. Indirect finance has, for instance, accounted for an increasing share of total credit and in terms of the type of institution that provide credit, commercial banks have been growing in importance as a source (Figure 2). As observers point out the definition of indirect finance (and what constituted permissible lending avenues) have widened in scope (Ramakumar and Chavan, 2007, for example) accounting for the apparent increases. These tend to vary across states and over time.

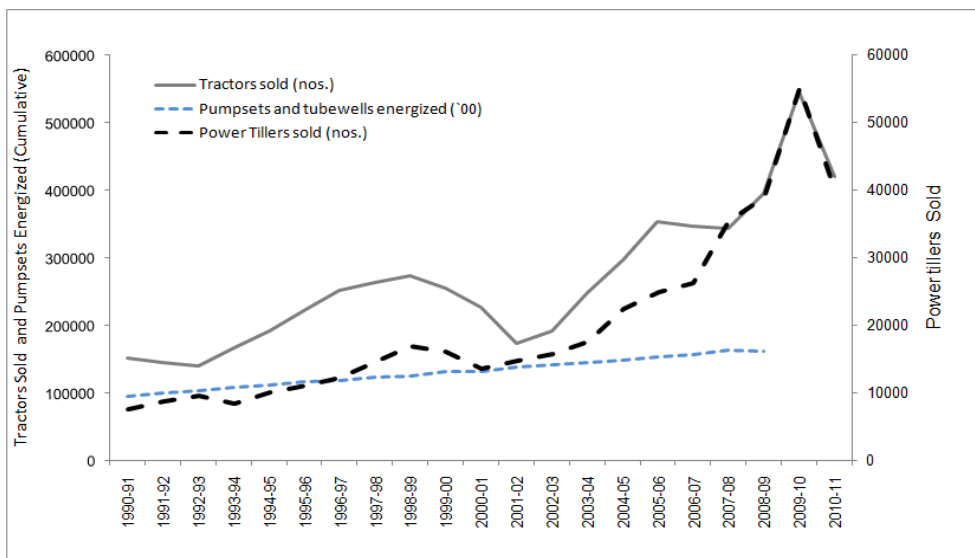
Parallel to transformation in the structure of agricultural credit is the equally rapid transformation of the agricultural sector. The past two decades have seen an increase in the share of livestock relative to crops, with extraordinary growth in poultry and dairy sectors. The crop sector has seen significant diversification, to high value commodities, to horticulture for example. At the same time, the contextual constraints of agriculture have also been significant issues. Rising costs of inputs, tightening labour markets, increasing wages and a host of environmental constraints such as water and soil quality degradation have resulted in plateauing yields and thinning profit margins. The past decade has seen increasing mechanization as evidence by the sale of machinery (Figure 3) as well as in the machine hours employed per hectare (Figure 4). In particular, it is evident from state level data on the Cost of Cultivation studies in India that the mechanization process has replaced animal and draught power while decline in human labour inputs into agriculture have been less by comparison (Figure 4).<sup>4</sup>

**Figure 2 : Source-wise Credit Disbursements**

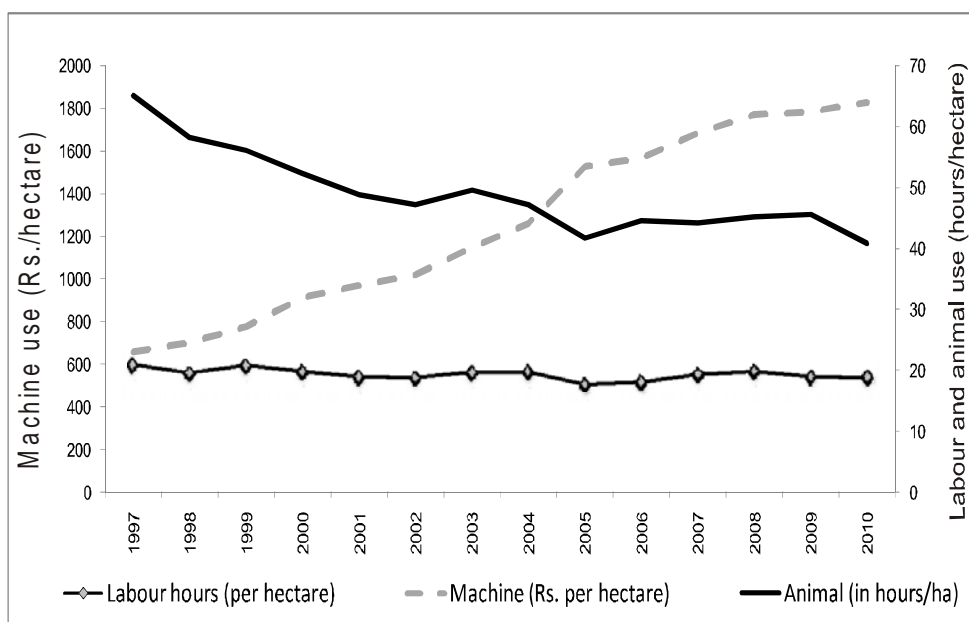


<sup>4</sup> For more details on cost of cultivation studies in India, see [http://eands.dacnet.nic.in/Cost\\_of\\_Cultivation.htm](http://eands.dacnet.nic.in/Cost_of_Cultivation.htm). Accessed January, 2014.

**Figure 3 : Trends in mechanization**



**Figure 4 : Labour use, draught animal and machine use in Indian agriculture**

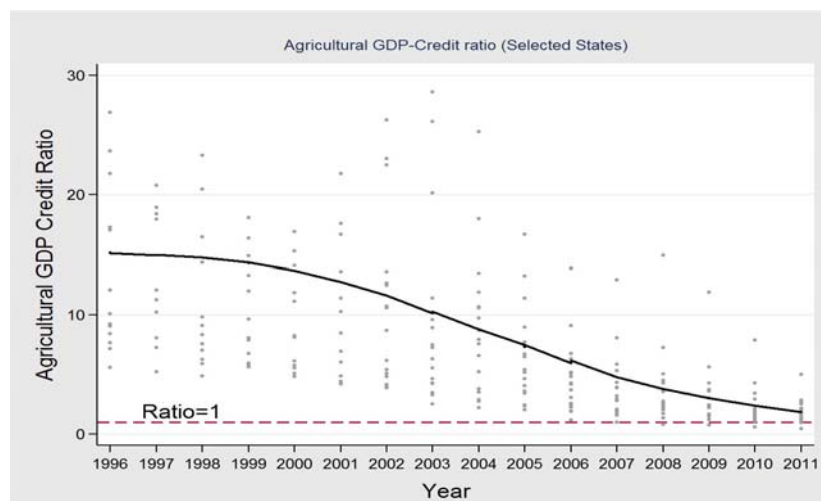


Source: Ministry of Agriculture, GOI, Cost of Cultivation in India (several years). The All India average is the weighted average across crops and states, where the weights are area sown under each crop within state and the net sown area across states.

There is now limited evidence that despite the widespread notion of a crisis, Indian agriculture might be more productive but that these improvements as represented by Total Factor Productivity (TFP) is coming from certain states (in the south and west) and certain sectors (such as horticulture and livestock).<sup>5</sup> Other evidence similarly suggests that productivity improvements is marked only in a few states (Chaudhari, 2013). Improvements in efficiency are low for a majority of states and might have in fact declined in several states implying the presence of potential gains in production even with existing technology.

The links that institutional credit has to agricultural productivity and growth are still somewhat under-researched. Figure 5 plots the ratio of agricultural GDP to credit flow over the period 1996-2011 for the various states. It is apparent that notwithstanding the variation across states, the ratio for the country as a whole has been declining over the past 15 years and is now close to one on average. These patterns appear to indicate that although credit is contributing to a larger share of the value of purchased inputs, the relationship between agricultural GDP and agricultural credit are possibly weak, raising important questions on the role of agricultural credit.

**Figure 5: The Ratio of Agricultural GDP and Credit for major states (1996-2011)**



*Notes: The scatter points represent the ratio of agricultural GDP and credit outflow and the line represent the lowest fit, i.e. locally weighted scatterplot smoothing.*

<sup>5</sup> See Rada(2013) for a recent analysis of Total Factor Productivity in India. Results suggest renewed growth in aggregate TFP growth despite a slowdown in cereal grain yield growth. TFP growth appears to have shifted to the Indian South and West, led by growth in horticultural and livestock products over the period 1980-2008.



### 3. Empirical Evidence on the Productivity of Institutional Credit in India

The best known study of the impact of formal rural credit in the context of India is by Binswanger and Khandkher (1992) who found that rural credit has a measurable positive effect on agricultural output. Cooperative credit advanced has elasticity with respect to output of 0.063. It is larger than the elasticity of crop output with respect to predicted overall rural credit which is near 0.027, but not precisely estimated. The estimate for the impact of commercial bank branches on output is more precisely estimated at 0.02. Others suggest that the effect on output is either non-existent, for example Burgess and Pande (2005) who claim that the increase in output due to formal credit comes entirely from increases in non-farm output, or have been negligible.<sup>6</sup> Others show that there is a positive association between credit and agricultural output but that this varies cross states and further that there is a positive association between the number of persons with accounts and agricultural output suggesting the financial inclusion could impact agricultural output positively (Das, et al, 2009).<sup>7</sup> However a dynamic panel data estimation of this relationship does not yield a statistically significant relationship at the state level. A district level panel for 2001-06 for four states however reveals that direct agricultural credit has a positive and immediate impact on agricultural output, and the number of account relating to indirect agricultural credit has a positive impact but with a year's lag. More recent work using time series techniques without modelling the underlying structure indicate that the elasticity of real agricultural GDP with respect to institutional credit to agriculture (from commercial banks, cooperatives and RRBs) is 0.22 with a one-year lag (Subbarao, 2012).<sup>8</sup> In contrast to the somewhat ambivalent findings on the association between agricultural credit and output,

---

<sup>6</sup> The estimates suggested that a one percent increase in the number of rural banked locations reduced rural poverty by roughly 0.4 percent and increased total output by 0.30 percent. The output effects are solely accounted for by increases in non-agricultural output – a finding which suggests that increased financial intermediation in rural India aided output and employment diversification out of agriculture.

<sup>7</sup> There are two models that have been estimated in the literature - fixed effects and random effects. The fixed effects model assumes that there is an unobserved time independent effect for each state of India and this effect could be correlated with other explanatory variables. The Hausman test helps decide whether to estimate a fixed effects model or a random effects model. The random effects model assumes that the unobserved effect is uncorrelated with all the explanatory variables.

<sup>8</sup> The model regresses  $\ln(\text{AGDP})$  on  $\ln(\text{Accredit}(-1))$ , where  $\text{AGDP} = \text{GDP from agriculture and allied activities at constant prices}$  and  $\text{Accredit} = \text{Credit for agriculture and allied activities deflated by GDP deflator with one year lag}$ . Other studies of this type include Ghosh (2010) , Pavaskar, et al. (2011).

there appears to be consensus that formal agricultural credit has an important effect on the use of inputs. Bhalla and Singh (2010) demonstrate in their cross sectional analysis using data for 2003-06 that the elasticity of demand for inputs with respect to credit is quite significant. At the all India level, credit elasticity's for use of fertilisers, tractors and tube wells hovered around 0.85 suggesting that 10 per cent increase in supply of direct institutional credit to the farmers leads to 8-9 per cent increase in use of fertiliser, tractors and tube wells in long run.

Their finding comes from a simple model that regresses the logarithm of inputs per unit of output on logarithm of institutional credit. They find that these elasticity's vary across regions and credit elasticity's are exceptionally very high for tractors, tube wells and irrigation for the technologically backward eastern region. Bhalla and Singh (2010) then suggest that institutional credit is indispensable for these regions with low input and investment in agriculture. Binswanger and Khandker (1992) point out that institutional growth and higher lending volumes lead to modest increases in aggregate crop output but sharp increases in the use of fertilizers and in investments in physical capital and, substantial reductions in agricultural employment. They conclude on that basis that expansion of credit has, therefore, led to the substitution of capital for agricultural labour.

These two studies emphasize the multiple pathways in which formal agricultural credit impacts production and this is well recognized by now (see Sriram 2007, for example). If one is to understand this linkage in all its complexity, one needs a detailed construct of these relationships.

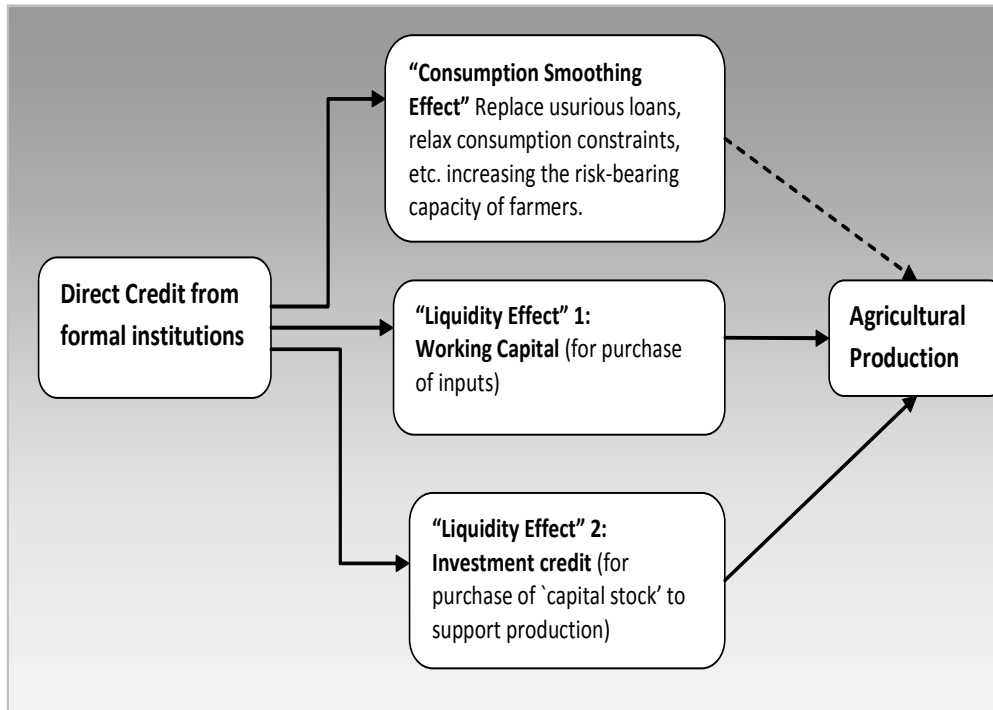
#### **4. Conceptualization of the Role of Formal Credit**

The fundamental attribute of credit implies that it serves as an intermediate input and does not directly enter as an input into agricultural production. It is therefore an enabling input. On account of this, it plays a complex role in farmers' production decisions, unlike physical inputs that have a more transparent relationship with the levels of output.

The impact of agricultural credit on agricultural production, efficiency and productivity could potentially occur through multiple channels. A simple conceptualization identifies three pathways through which formal credit can influence outcomes (Figure 6). First, formal credit can be used to purchase inputs over the cropping season, enabling a farmer to maximize the yield from the cultivated area, given a level of capital stock. This channel represents a direct and within-season impact on production. Second, formal credit can be used to make investments in irrigation facilities, machines and draught animals that represent the use of credit for building up capital stock to support agricultural production. This second channel typically impacts production with a time lag. Both of these represent a “liquidity effect” (Binswanger and Khandkher, 1992) since they relieve a farmer’s credit constraint and enables purchase of critical inputs to support production. Third, formal credit is often used to replace informal credit associated with high interest burden. Anecdotal evidence suggests that farmers often borrow from formal sources to pay off high interest loans taken from money lenders. This has the effect of relieving credit constraints, reducing the interest burden and indebtedness. Existing economic literature on wealth effects and risk aversion suggests that this often enables farmers to make decisions that increase profitability and efficiency. Even when formal credit is diverted to consumption, there could be an implicit wealth effect that impacts farmer’s production decisions. This last channel, which incorporates a “consumption smoothing” effect is often difficult to capture.

Collectively, formal agricultural credit can be regarded as having two kinds of impacts – first, it could enable a farmer to move to the production frontier so that given prevalent technology, a farmer is using levels of inputs that enable him/her to produce at the frontier, from among many feasible combinations of crops. Second, it could enable a farmer to move on to a superior production frontier, so that given a level of inputs, the farmer is able to produce more of one or more of the crops. The first is represented as a move from within the production possibility set to the frontier (constituting efficiency improvement) and the second is represented as a shift of the frontier itself (constituting productivity improvement). The impact of formal agricultural credit on agricultural output conflates these two aspects of productivity and efficiency effects.

**Figure 6 : Schematic Representation of Pathways**



## 5. Empirical Strategy

### a. *The Challenges*

Empirically, these effects are difficult to entangle. While a separation of these effects and pathways are ideally studied at the household level, this logic can be extended to an aggregate level by choosing empirical counterparts that represent these dimensions at the state or district level, with important caveats. Aggregation often masks a lot of the heterogeneity and complexity of the ways in which formal agricultural mediates production processes. The distribution of credit among farmers or farmer groups is often uneven and is not taken into account when in an aggregate analysis. Similar problems occur with aggregating over all the crops and commodities, which masks the differential impacts and relative importance of credit. While this study is cognizant of these issues, data limitations allow only an aggregate-level analysis.

Several methodological and data challenges persist in estimating the impact of formal agricultural credit on output, especially at the aggregate level. Firstly, informal credit which forms a major source of credit is something of a black box with virtually no data available on its quantum or how it is used. The fungibility of credit too poses difficult problems for research since it makes short and long term credit indistinguishable at the farmers' end. Similarly there could be spill overs into non-farm sector that are unknown to the lenders and to researchers. Direct and Indirect finance might also not be watertight categories so that it could be the case that direct credit to the farmer is in fact used for ancillary activities that support agriculture. All of these make it hard to pin down the precise nature of relationship between credit and agriculture. Further, the dynamic effects are difficult to capture since credit flow in a particular year might yield cumulative benefits over several years. This is particularly difficult to model. The other major challenges stem from data constraints at the state level. Existing data for variables of interest are not often available for all the states and for all the years, forcing us to confine the analysis to the states for which we have complete data for the period of focus.

The empirical challenges of studying the relationship between formal agricultural credit and output at an aggregate level are best described by Binswanger and Khandker (1992). The first problem is the joint determination of both observed formal credit to agriculture and aggregate output. The second problem emanates from the absence of data on informal credit, which makes it difficult to capture the impacts of formal credit that might work through reduced informal borrowing, and not factoring this might yield the estimates that reflect the true effect of formal credit. Credit advanced by formal lending agencies such as banks is an outcome of both the supply of and demand for formal credit. The amount of formal credit available to the farmer, his/her credit ration, enters into his/her decision to make investments, and to finance and use variable inputs such as fertilizer and labour. The third econometric problem arises because formal agriculture lending is not exogenously given or randomly distributed across space. Ways to be able to address some of these issues are central concerns of this study.

**b. Methodology**

To parse this complex relationship given the limitations of data, a combination of three approaches are used (Box 1). The first is a simple model that regresses agricultural GDP on credit flow using state level data. This is a catchall approach that cannot comment on the pathways or provide a causal interpretation. The second method estimates a hybrid profit-production function that regresses agricultural GDP on a vector of relevant inputs, prices and agricultural credit for the same year. This is a direct approach to estimating the relationship between credit and agricultural GDP in reduced form. The possible endogeneity of credit is addressed by the use of a control function approach where a regression function is estimated that identified and then “controls” for the endogenous component of observed credit flow (Imbeds and Wooldridge, 2007). The coefficient on credit in this case captures one dimension of impact of credit that is not mediated through inputs. The third method is perhaps the most comprehensive and models the pathways approach in what is referred to as a mediation analysis framework, where inputs are regarded as mediating the relationship between institutional credit and agricultural GDP (Preacher and Hayes, 2008). Here, a set of regressions estimates input demand as a function of credit, among other things and controlling for endogeneity of credit (indirect effect), and the hybrid production-profit function as a function of inputs and credit, recognizing that credit can also have direct effect on GDP. The coefficients representing the responsiveness of input use to institutional credit are therefore used as components to construct the total impact of agricultural credit on agricultural GDP (Preacher and Hayes, 2008). The impact of credit on agricultural output is thus derived as the sum of the

**Box 1: The Three Approaches**

**Method 1:** The Simple Model using state level data and dividing into time periods in nominal terms as well as accounting for prices.

**Method 2:** The Direct Approach that regresses agricultural GDP on various inputs (fertilizers, tractors pump sets), prices, rainfall, public expenditure on agricultural, including credit flow and the estimated endogenous component of credit or the “control” variable.

**Method 3:** The Pathways Approach that works on three stages – credit market, input demand functions and value of GDP function, estimated in a SURE framework for panels and incorporating the control variable.

contribution of credit to the use of specific inputs, capital or the cropping pattern, weighted by the contribution of these to the total value of agricultural production. These are estimated in a Seemingly Unrelated Regression Equations (SURE) framework that acknowledges the potential interrelationship between these variables and the fact that they might be jointly determined. Appendix 2 contains a representation of the models estimated.

For all three methods, we use state-level data to estimate the relevant parameters of interest for India as a whole. The analysis pertains to the time period 1995-96 to 2011-12, for which the data is complete. Further, we also perform an analysis for two sub-periods first (1995-96 to 2003-04) and post doubling (2004-05 to 2011-12). In all the methods, we make the assumption of constant elasticity of demand, which is in fact a non-trivial assumption, but one that is typical of studies of this kind.

As mentioned earlier, the chief methodological challenge involves dealing with the issue of endogeneity of observed credit. There are several approaches to deal with this. One approach to tackle the endogeneity of observed volumes of credit is to use the predicted supply of credit at the state level, following Binswanger and Khandker (1992) or to use lagged credit that is correlated with current year credit. Each of these involves a set of defensible assumptions. The latter approach however creates problems because there could typically be lagged response of agricultural GDP which renders lagged credit an inappropriate instrument. In this study we use a control function approach to separate out the explained exogenous variation in the credit flow to agriculture from the unexplained and possibly endogenous component of credit flow and use the predicted residuals from the control function to control for endogeneity in the main set of regression equations (Imbeds and Wooldridge, 2007). Appendix 2 provides more details on the approach and the regressions estimated. The standard errors for both models 2 and 3 are bootstrapped to account for the use of predicted variables as explanatory variables.

### **c. Data Sources**

To implement this method, we use a data set that is more detailed than used in the literature till date. For all the major states in India details on credit, agricultural

GDP, composition of the value of output in the agriculture and allied sector and variables relating to land under cultivation provide the key variables of interest. Data on physical quantities of Nitrogen, Phosphorus and Potassium fertilizers have been assembled as also pesticides (technical grade) as also tractors and pump sets energized. Use of certified seeds is only available at the national level and is only used to explain agricultural GDP but not as a separate input since this cannot be done at the state level. Other state level variables representing the level of development include per capita State Domestic Product, percentage of villages electrified, the number of commercial bank branches. Prices are typically available at the all-India level, for the various inputs, power and fuel as well as output (food grains, etc.). State level wage rates are compiled and in the absence of annual data on labour inputs used, wage rates are expected to proxy labour use. We are also able to account for labour, machine and animal power intensity per hectare from Cost of Cultivation data at the state level. These are computed within state as the weighted average across crops (with weights being the area under different crops), and across states as the weighted average across states (with weights being the state's share of gross cropped area). While for labour and animal, we use hours per hectare, machine use data are in value terms. Appendix 3 provides details of the data used for the analysis and the sources. While data is not available for all the states for all the years, only those states and years for which all data was available are used in the analysis. Essentially, the data then consists of time series data for the major states so that the panel data framework is used to estimate the impact of credit on agricultural output at the national level, with state fixed effects. The models are estimated for the major agricultural states, since data is not complete for all the states.

***d. Scope and Limitations of the Study***

The scope of this effort will be limited to estimating the impact of formal credit from different institutions – cooperatives, rural and commercial banks – on agricultural output. The spillover effects of formal credit on the rural non-farm sector will not be addressed specifically, an issue that research suggests might be quite important (Pande and Burgess, 2005). Neither does this work address the implications of recent interventions in credit policy such as debt waiver; this is already studied elsewhere (Kanz, 2012; Cole, 2009). Another important area



that is beyond the remit of this study is the fiscal implication of the system of disbursing formal rural credit. One could argue that to gauge the true impact of credit, one would have to account for the fiscal burden (or some notion of net benefit cost ratio) (Binswanger and Khandkerm 1992). In this work, the question of interest is to gauge whether or not direct formal rural credit impacts agricultural output, the extent to which it does so and the relative importance of the different pathways through which these effects occur.

## **6. The Results**

### **a. *The Productivity of Credit: Credit Elasticity of Agricultural GDP***

The range of estimates obtained from the various methods suggest that the credit elasticity of agricultural GDP for the entire period 1995-96 to 2011-12 is 0.21, i.e. a 10% increase in institutional credit flow to agriculture in current prices is associated with a 2.1% increase in agricultural GDP that year expressed in current prices (Table 1). This model controls for prices and hence account for inflation.

Compared with these results in the simple model (method 1), the estimated credit elasticity is 0.036 when the model controls for the use of inputs and a vector of input and output prices and for the possible endogeneity of credit through a control function approach (method 2). The structural model incorporating the pathways through which credit influences agricultural GDP (method 3) yields estimates of credit elasticity of 0.21. But neither method indicates that these coefficients are statistically significant (Table 1).

The results from a period-wise disaggregate analysis is less conclusive. While the simple model suggests that the elasticity continues to be statistically significant but has weakened in the second period, the other two approaches, one that controls for prices and inputs and the other the captures the pathways suggest that the relationship between credit and agricultural GDP may have declined, but none of the estimated credit elasticity coefficients are statistically significant and hence one cannot reject the null that the responsiveness of agricultural GDP to credit has been zero.

At the state level, estimates of credit elasticity of agricultural GDP from the 'simple' model, the only feasible option given the data, vary mostly between 0.05 and 0.7 with several states show statistically insignificant elasticity's (Table 2). Further, at the state level, the time trend of elasticity estimates varies across states. In some states the relationship appears to have strengthened post doubling (for example, in Tamil Nadu, Maharashtra and Gujarat) whereas for several others it has weakened (including for Himachal Pradesh, Rajasthan, Uttar Pradesh, Karnataka, Kerala, Chhattisgarh Madhya Pradesh, etc.). Punjab appears to show a consistently strong relationship between agricultural GDP and credit. Notwithstanding these variations, a striking feature in the relationship between agricultural GDP and credit flow is the pronounced convergence in the agricultural GDP-credit flow ratio suggesting that perhaps the marginal returns to credit might be equalizing across states (Figure 7). Appendix 6 provides some details of the regional imbalances in credit flow relative to the contribution of these regions to agricultural GDP.

Further clarity and insight can only be obtained through detailed case studies or primary surveys, owing to the paucity of state level data that precludes modelling efforts at the state level. This underscores the potential problems with aggregation and that observations on trends cannot be generalized.

**Table 1: Summary Results of the three models**

<b>Time period for which elasticity of GDP with respect to credit is computed</b>	<b>Method 1 (Simple Model)</b>	<b>Method 2 (Direct Approach using Control Function methods)</b>	<b>Method 3 (Pathways approach using Control Function for credit)</b>
(1)	(2)	(3)	(4)
The Entire Period	<b>0.214***</b>	<b>0.036</b>	<b>0.210</b>
Phase I	<b>0.266***</b>	<b>- 0.010</b>	<b>0.102</b>
Phase II	<b>0.099***</b>	<b>0.138</b>	<b>- 0.030</b>

**Notes:**

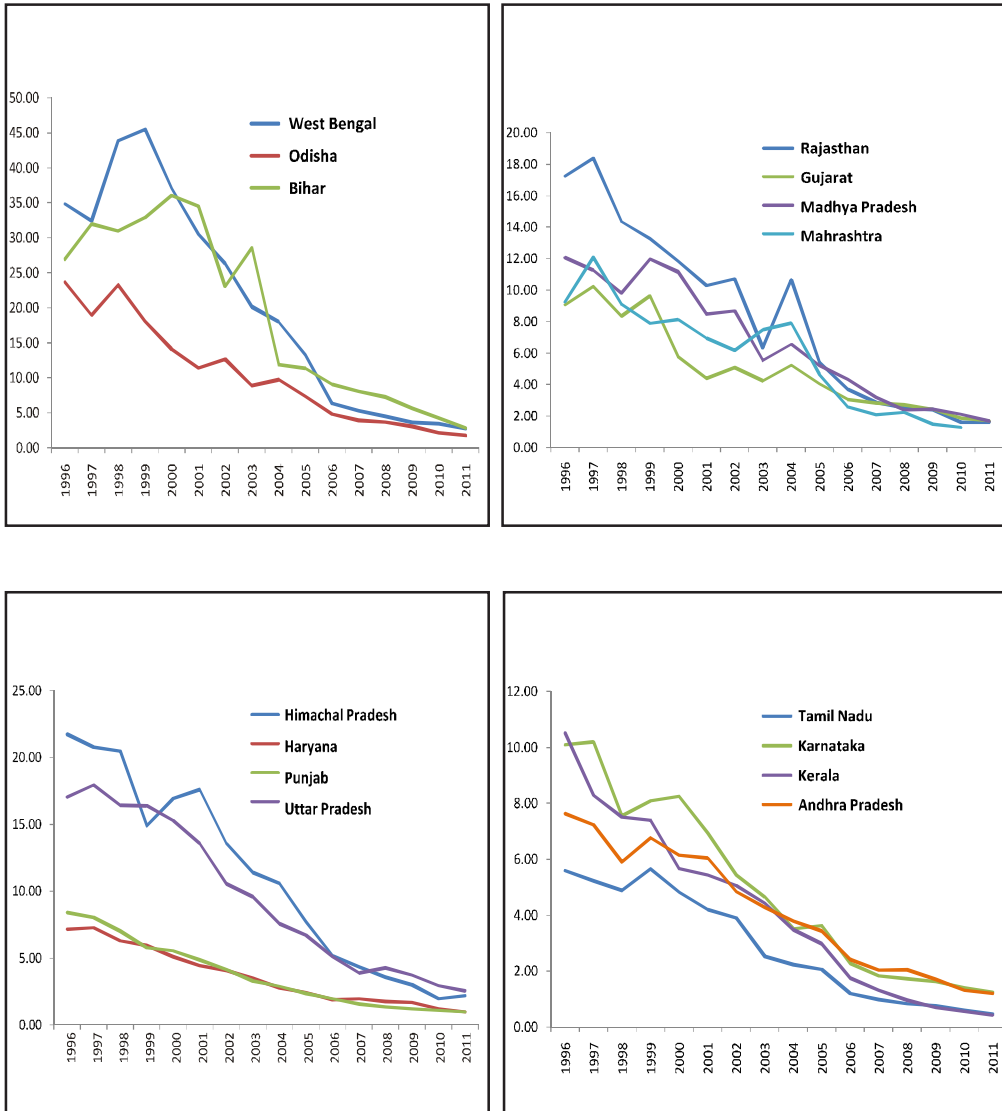
- (1) The Hausman Test suggests that the fixed effects model is appropriate. For Model 1, the Hausman chi-squared (1)=15.51\*\*\*
- (2) Granger Causality tests were computed for a modified version of Model 1 with lagged credit, that indicates that agricultural credit Granger-causes agricultural GDP and not the other way.
- (3) The Chow test for Method 1 indicates that the second phase coefficient is not statistically significantly different from that from the first period.
- (4) Detailed results are available with the authors and can be provided on request. See also Appendix 4 and 5.
- (5) Standard errors for the control function approach are bootstrapped 200 times.
- (6) The states included in this regression are Andhra Pradesh, Bihar, Chhattisgarh, Gujarat, Haryana, Himachal Pradesh, Jharkhand, Karnataka, Madhya Pradesh, Maharashtra, Orissa, Punjab, Rajasthan, Tamil Nadu, Uttar Pradesh, Uttarakhand, West Bengal. For new states, data since their inception are included.
- (7) All models control for prices.

**Table 2: State-wise Credit Elasticity of Agricultural GDP under the Lag Model**

Census Code	State	Whole Period	Phase I	Phase II
1	Jammu and Kashmir	0.053*	0.151	0.002
2	Himachal Pradesh	0.303**	0.232**	0.112
3	Punjab	0.340***	0.522**	0.129**
4	Chandigarh	0.047	0.016	-0.011
5	Uttaranchal	0.019	-0.103***	-0.086
6	Haryana	0.406***	1.900***	-0.440
7	Delhi	0.029	-0.024	-0.109
8	Rajasthan	0.171	0.853***	0.060
9	Uttar Pradesh	0.288***	-0.960**	0.040
10	Bihar	-0.062	-0.427***	0.574*
11	Sikkim	0.092***	0.029	-0.030
12	Arunachal Pradesh	0.035	0.044	-0.004
13	Nagaland	-0.022	-0.217	-0.023
14	Manipur	-0.048*	-0.073**	-0.061
15	Mizoram	0.072*	0.092	-0.119
16	Tripura	0.013	-0.147	-0.001
17	Meghalaya	-0.000	-0.048*	0.065***
18	Assam	-0.006	-0.018	-0.005
19	West Bengal	0.015	-0.866***	0.005
20	Jharkhand	0.255**	0.252	-0.420
21	Orissa	0.321***	0.421	0.028
22	Chhattisgarh	0.376*	0.205***	-0.054
23	Madhya Pradesh	0.490***	0.555*	-0.049
24	Gujarat	0.574***	0.826	0.567***
25	Daman and Diu	-	-	-
26	Dadra Nagar Haveli	-	-	-
27	Maharashtra	0.016	-0.007	0.209*
28	Andhra Pradesh	0.448***	1.046*	0.143
29	Karnataka	0.278*	1.591***	0.039
30	Goa	-0.095	-0.300	0.017
31	Lakshadweep	-	-	-
32	Kerala	0.325***	0.395***	-0.033
33	Tamil Nadu	0.355***	0.493	0.298***
34	Pondicherry	0.187**	0.069	0.133
35	Andaman & Nicobar Islands	-0.006	0.040*	-0.070

Notes: The state level elasticity's are the slope coefficient from a regression of agricultural GDP on credit flow to agriculture, controlling for wholesale price index. States have been arranged according to census code.

**Figure 7: State-wise ratio of Agricultural Gross Domestic Product and Credit Flow (1996-2011)**



Notes: Only the major states have been included.

**b. Pathways of “productivity” : Input Demand and Credit Flow**

If credit is an enabling or mediating input, its impact on output and productivity operates through its influence on the level of purchased inputs, variable and fixed. A system of input demand functions is estimated as a Seemingly Unrelated Regression Equations (SURE), with credit as one of the explanatory variables along with the predicted residuals from the control function to account for the endogeneity of credit (Table 3). The inputs included are fertilizers (a total of Nitrogen, Phosphate and Potassic fertilizers), pesticides, tractors purchased and pump sets energized annually. The other inputs include labour and animal power intensity as well as expenditure per hectare on machine use. Controls include other inputs like land, distinguished by type of irrigation, prices of inputs, prices of food articles, lagged wages of unskilled labour, government expenditure, lagged variable accounting for the structure of agriculture. Due to paucity of state level annual data, detailed information on other equipments is not available for inclusion; tractors are therefore a coarse proxy for equipment.<sup>9</sup> So too with pump sets, which represent one type of irrigation investment. Investments in drip and sprinkler irrigation, etc. are hard to capture for lack of data. The inclusion of government expenditure likely captures the subsidies offered for these irrigation investments. These results need to be interpreted with caution. The results (Table 1) suggest that over the entire period, institutional credit has a strong association with all inputs excepting pumpsets energized. A 10 % increase in credit flow in nominal terms leads to an increase by 1.7% in fertilizers (N, P, K) consumption in physical quantities, 5.1% increase in the tonnes of pesticides, 10.8% increase in tractor purchases. The credit elasticity of new pump sets energized is, however, not statistically significant.

Interestingly, there appears to be a marked shift in the pathways between the first and second phases. Whereas in the first phase, institutional credit seems to have been channelled into purchase of variable inputs such as fertilizers, in the second phase, credit seems to be directed to investments in tractors. This is consistent with the popular perception that high labour costs and a shortage

---

<sup>9</sup> Recent years have seen a rapid growth in tractor financing by the manufacturers themselves. In the absence of data, this study only controls for it by using the number of input dealers, under a coarse assumption that this would be correlated with growth of tractor dealership.

of farm hands is prompting mechanization and it appears that credit is aiding and enabling this transition. The absence of a strong relationship with pump sets could be on account of the variable representing irrigated land and perhaps government expenditure, which might include subsidies for pump sets. There might thus be a conflation of the many explanatory variables.

It is apparent that availability of credit also reduces the labour intensity of agriculture by 2%. However there is no evidence that could be consistent with the idea of labour substituting mechanization. One possible interpretation is that increasingly some operations such as manual weeding are being replaced by the use of chemical weedicides and so on. Likewise greater ownership of tractors reflects this mechanization rather than just the paid out cost for machine use. Alternatively it could be that mechanization as represented by the responsiveness of tractors to credit flow substitutes animal power (rather than labour use).

Usually, this weak relationship especially of capital equipment such as tractor and pump set is strongly suggestive that mechanization is preserving productivity or agricultural growth rather than enhancing it (Binswanger and Khandkher, 1992). In these contexts, credit can be interpreted as performing two roles the preservation of productivity levels by supporting mechanization of certain kinds and contributing to the growth of agricultural GDP through the purchase of variable inputs. All these results collectively suggest that credit indeed appears to have played a role in supporting the changing face of agriculture in India.

Overall, it seems quite clear that input use is sensitive to credit flow, whereas GDP of agriculture is not. This seems to indicate that the ability of credit to engineer growth in agricultural GDP is impeded by a problem of productivity and efficiency where the increase in input use and adjustments in the pattern of input use are not (yet) translating into higher agricultural GDP. Credit seems therefore to be an enabling input, but one whose effectiveness is undermined by low technical efficiency and productivity.

**Table 3: Input Demand System : The Credit Elasticity of Input Demand from a SURE Model**

<b>Input or Agricultural GSDP</b>	<b>All (1995/96 to 2011/12)</b>	<b>Phase 1 (1995/96 to 2003/04)</b>	<b>Phase 2 (2004/05 to 2011/12) Phase II</b>
Fertilizers	0.17*	0.33**	0.06
Chemicals	0.51***	0.83	0.26
Tractors bought	1.08***	0.10	1.67***
Pump sets Energized	-0.84	0.04	-0.83
Labour hours per hectare	-0.20**	-0.28	-0.16
Animal hours per hectare	0.18	-0.07	-0.04
Machine use (Rs. Per hectare)	-0.67**	-1.13	-0.17
Agricultural Gross State Domestic product	0.083	-0.1	0.13

**NOTES:**

- (1) This is estimated as a SURE (Seemingly Unrelated Regression Equation). Breusch-Pagan test of independence:  $\chi^2(28) = 48.303$ ,  $Pr = 0.0099$  suggests that the null hypothesis of independence is rejected and that these equations need to be estimated as a system.
- (2) The standard errors were bootstrapped with 200 repetitions to account for the inclusion of the predicted variable from the control function.
- (3) The regression was run in deviation form to allow the direct use of SUREG command in STATA 13.
- (4) The coefficient of the control function variable is not statistically significant in most versions of these regressions.
- (5) The detailed regressions are available with the author. See Appendix 4 and 5



## **7. Concluding Remarks**

This paper sought to investigate the relationship between institutional credit to agriculture and agricultural Gross Domestic Product (GDP). Collectively, the results suggest that the fears that credit might be ineffective are perhaps misplaced. There is strong evidence that credit is indeed playing its part of supporting the purchase of inputs and perhaps even aiding the agricultural sector respond to its contextual constraints.

The evidence of the impact of credit on agricultural GDP is however weak at best, irrespective of the approach used, assuming a constant credit elasticity of agricultural GDP. Empirical patterns suggest that the relationship between credit and agricultural GDP is somewhat weak in the second phase. Further, as is evident from the regression of agricultural GDP on inputs and prices, other than fertilizers and labour, few inputs are strong drivers of GDP. In fact it appears that the sectoral composition and output prices are important determinants of agricultural GDP, apart from certain types of government expenditure and the irrigated area. Usually, this weak relationship especially of capital equipment such as tractor and pump set is strongly suggestive that mechanization is preserving productivity or agricultural growth rather than enhancing it. In these contexts, credit can be interpreted as performing two roles the preservation of productivity levels by supporting mechanization of certain kinds and contributing to the growth of agricultural GDP through the purchase of variable inputs. All these results collectively suggest that the success of credit in enabling the increase in use of purchased inputs and effecting changes in input mix, supporting the changing face of agriculture in India has not translated fully into agricultural GDP growth as such.

## REFERENCES

Bhalla, G.S. and Gurmail Singh (2010) Growth of Indian Agriculture: A District Level Study, Planning Commission, Government of India. Available at- [http://planningcommission.nic.in/reports/sereport/ser/ser\\_gia2604.pdf](http://planningcommission.nic.in/reports/sereport/ser/ser_gia2604.pdf)

Binswanger, Hans.P. and Shahidur Khandker (1992): 'The Impact of Formal Finance on Rural Economy of India', *World Bank, Working Paper No. 949*. (also appeared in *The Journal of Development Studies* Volume 32, Issue 2, 1995)

Burgess, Robin and RohiniPande (2005) Do Rural Banks Matter? Evidence from the Indian Social Banking Experiment, *American Economic Review*, American Economic Association, vol. 95(3), pages 780-795, June.

Chaudhary, Shilpa (2013) Trends in Total Factor Productivity in Indian Agriculture: State-level Evidence using non-parametric Sequential Malmquist Index, Working Paper.

Chavan, P. (2009). How Rural is India's Agricultural Credit. *The Hindu*.

Cole, S. (2009). Fixing market failures or fixing elections? Agricultural credit in India. *American Economic Journal: Applied Economics*, 219-250.

Das, Abhiman, Manjusha Senapati, Joice John (2009): 'Impact of Agricultural Credit on Agriculture Production: An Empirical Analysis in India', Reserve Bank of India Occasional Papers Vol. 30, No.2, Monsoon 2009

De, Sankarand and SiddharthVij (2012): Are Banks Responsive to Exogenous Shocks in Credit Demand? District – level Evidence from India, Research Paper, CAE, ISB, Hyderabad

Ghosh, Nilanjan (2010) Incredulity of Irresponsiveness: Is Agricultural Credit Productive? *Commodity Vision*, Volume 4, Issue 1, July 2010 Takshashila Academia of Economic Research Ltd, 2010

Golait, R. (2007): Current Issues in Agriculture Credit in India: An Assessment, RBI Occasional Papers, 28: 79-100.

Government of India (2013) Status of Indian Agriculture 2011-2012, Ministry of Agriculture, Government of India.

Imbens, Guido and Jeffrey Wooldridge (2007) Control Function and Related Methods, What's New in Econometrics? *Lecture Notes 6*, National Bureau of Economic Research (NBER), Summer 2007. [http://www.nber.org/WNE/lect\\_6\\_controlfuncs.pdf](http://www.nber.org/WNE/lect_6_controlfuncs.pdf). Accessed July, 2013.

Kanz, M. (2012). What does debt relief do for development? Evidence from India's bailout program for highly-indebted rural households. *World Bank Policy Research Working Paper*, 6258, Washington D.C.

Pavaskar Madhoo, Sarika Rachuri, Aditi Mehta (2011) Agricultural Credit Productivity in India  
*Commodity Vision* Volume 4, Issue 5, March 2011 Takshashila Academia of Economic Research Ltd, 2011

Preacher, K.J. and Hayes, A.F. (2008). Asymptotic and resampling strategies for assessing and comparing indirect effects in multiple mediator models. *Behavioural Research Methods*, 40, 879-891.

Rada, Nicholas E., 2013. Agricultural Growth in India: Examining the Post-Green Revolution Transition 2013 Annual Meeting, August 4-6, 2013, Washington, D.C. 149547, Agricultural and Applied Economics Association.

Ramakumar, R. and Chavan, P. (2007). Revival of agricultural credit in the 2000s: An Explanation. *Economic and Political Weekly*, 57-63.

Sriram, M.S.(2007): 'Productivity of Rural Credit: A Review of Issues and Some Recent Literature', *Indian Institute of Management Ahmedabad, Working Paper* No.2007-06-01.

Subbarao Duvvuri (2012) Agricultural Credit - Accomplishments and Challenges, Speech delivered at NABARD, July 12, 2012.

**APPENDIX 1 : Overview of GLC Flow during 2003-04 to 2013-14 - All India**

<b>Year</b>	<b>No of agriculture accounts (in lakh)</b>	<b>Amount disbursed (in Rs. crore)</b>	<b>Per account (in rupees)</b>
2003-2004	NA	86981	
2004-2005	NA	125309	
2005-2006	NA	180486	
2006-07	423.13	229400	54,215
2007-08	439.34	254658	57,964
2008-09	456.1	301908	66,193
2009-10	482.3	384514	79,725
2010-11	549.6	468291	85,206
2011-12(P)	646.57	511029	79,037
2012-13(P)	703.57	607375	86,328
2013-14	799.68	711621	88,988
% growth in 2013-14 over 2012-13	13.66	17.16	3.08
CAGR(2003-04 to 2013-14)	9.52*	23.39	7.34*
CAGR(2004-05 to 2006-07) (Doubling period)		35.30	
CAGR(2007-08 to 2013-14) (Post doubling period)	10.50	18.68	7.41

Note: \* denotes that CAGR is for the period 2006-07 to 2013-14

Source: IBA for Commercial Banks and NABARD for Cooperative Banks and RRBs

## APPENDIX 2 : Empirical Strategy : The Methods Described

### Method 1: Time Series Simple Model

The first method is a simple model, where agricultural GDP is regressed on the current time period's credit to agriculture. This model is estimated as a panel model with fixed effects, based on Hausman test for choice of models. This model is also run separately for the first phase (1995-96 to 2003-04) and second phase (2004-05 to 2010-11) and for individual states.

$$GDP_{it} = \alpha + \rho \ln(K_{it-1}) + e_{it}$$

Where 'i' refers to the state and 't' the financial year.  $\rho$  is the 'lagged' credit elasticity of agricultural GDP, the non-lagged version is presented in the text.

### Method 2: Reduced Form Control Function Approach

#### Credit equation/ Control Function

The first step in this method is to address the endogeneity of credit. Since the demand for credit itself could be a result of agricultural GDP, a control function approach is adopted to separate out that part of credit that could be due to exogenous factors and that part which might represent the endogenous component. In this regression, we use variables that are hypothesized to exogenously influence the level of credit. This includes the previous year's rainfall, per capita income, structure of agriculture and the number of branches of commercial banks in the state.

$$\ln(K_{it}) = \alpha + \sum \theta_i \ln(E_{it}) + \vartheta$$

Where  $K_{it}$  represents the total credit flow to agriculture (all sources and short and long term) and  $E_{it}$ .  $\vartheta$  can be regarded as the endogenous part of credit, the estimated values of which are used in the next stage regression.

### Outcome function

The outcome function is essentially a hybrid production-profit function that maps a set of inputs to outputs, controlling for exogenous factors such as the weather, market prices of output and inputs, public infrastructure. Since the aggregate value of output is likely sensitive to the composition of crops or the cropping pattern, the regression will control for the proportion of area under the major groups of crops – food grains (cereals and pulses), oilseeds, fibre, horticulture, spices and plantation crops (such as tea, rubber and coffee). In lieu of private and public capital stock and investment in agriculture which capture capital inputs into production but are not available for all the states, select machinery and equipment are included. A key component of this regression is the estimated “control” variable from the Control Function described above that serves to control for endogeneity and thereby allow us to interpret the coefficient on credit as a causal effect rather than mere correlation.

$$\ln(GDP) = \alpha + \rho \ln(K_{it}) + \delta \ln(\phi_{it}) - \sum_k \beta_k \ln(Z_{ikt}) + \sum_h \gamma_h P_{iht} - \sum_l \theta_l O_{ilt} + \epsilon_{it}$$

Where K is the credit flow, Z is the vector of inputs (including N, P K fertilizers, pesticides, tractors and pump sets) and other factors (O) such as rainfall, per capita state domestic product, percentage of villages in the state that are electrified and so on, P is the vector of prices, etc.

$\rho$  is the credit elasticity of agricultural GDP, with associated bootstrapped standard errors for hypothesis testing.

### Method 3: Reduced Form Control Function Approach

#### (a) Credit equation/ Control Function

$$\ln(K_{it}) = \alpha + \sum \theta_i \ln(E_{it}) + \vartheta$$

#### (b) Input / Capital Demand Equations

In order to retrieve the coefficients that represent the different pathways, we will estimate the set of structural equations to understand the relative contribution of credit to different components of the agricultural production-profit function.

$$\ln(Z_{ikt}) = \alpha - \pi_k \ln(K_{it}) + \delta \ln(\phi_{it}) + \sum \gamma'_h P_{iht} - \sum \theta'_l O_{ilt} + \epsilon_{it}$$

The input demand functions depend on credit (among other things). We then estimate input demand equations as a system, where the inputs are measured in physical units, and explanatory variables include both the “control” variable and credit. The rapid changes in the cropping pattern in India in the past two decades is both in response to the growing market opportunities as well as the growth of processing sectors which in turn are likely impacted by indirect credit. So the composition of the agricultural sector and the growing importance of livestock, poultry and fisheries would need to be accounted for. Credit for purchase of milch animals as well as construction of broiler sheds for contract growing are important components of agricultural output. Due to paucity of detailed annual data on draught animals, share of livestock output in total agricultural output is used as a proxy. The inputs used include fertilizers such as Nitrogen (N), Phosphorous (P) and Potassium (K), pesticides. Standard errors are computed through bootstrapping procedures to account for the fact that these regressions use predicted values at different stages.

**(c) Outcome function**

$$\ln(GDP_{it}) = \alpha + \rho \ln(K_{it}) + \delta \ln(\beta_{it}) + \sum_k \beta_k \ln(Z_{ikt}) + \sum_h \gamma_h P_{iht} - \sum_l \vartheta_l \theta_{lit} + \varepsilon_{it}$$

We then estimate the function explaining agricultural GDP in monetary terms as a hybrid profit function. Compute the total impact of credit as the sum of the impacts on inputs weighted by the impact of the input in question on agricultural GDP.

**(d) Credit Elasticity of Agricultural GDP**

$$Elasticity = \rho + \sum_k \pi_k \beta_{ik}$$

The impact of credit on agricultural GDP can then be derived as the sum of the contribution of credit to the use of specific inputs, capital or the cropping pattern, weighted by the contribution of these to the total value of agricultural production. Standard errors reflect bootstrapped estimates.

### APPENDIX 3 : Data and Sources

Variable name	Variable label (units)	Mean	Min	Max	Source
agelectariff	Power tariff to agriculture (paise/kWh)	80.72	0	512.88	Central Electricity Authority EPWRF time series
Animal hours ha	Animal (hours/ha)	57.42	1.15	241.16	Ministry of Agriculture, Cost of Cultivation Studies
Area non-food total	Total area under non-food crops ('000 hectares)	2905.47	1	52398.00	Ministry of Agriculture
cagalledtotal	Total capital expenditure on agriculture and allied services.	13384.02	- 67499	541032.00	State Finances : A Study of Budgets, RBI
Cladvecoservtotal	Total capital expenditure on economic services.	64155.42	- 18091	1881901.00	State Finances : A Study of Budgets, RBI
commercial	Number of commercial bank branches	4165.49	7	101261.00	CMIE
egg_prod )	Production (in Lakh)	12404.66	1	321068.00	Ministry of Agriculture, Agricultural Statistics at a Glance
fert_salepoint_total	No. of Fertilizer Sale Points (Total)	7835.36	0	72344.00	Ministry of Agriculture, Cost of Cultivation Studies
Gca	Gross Cropped Area ('000 ha)	11606.41	2	195357.00	Ministry of Agriculture
gsdp_agri	GSDP (in Rs. Lakh)	2943807.00	3943	127000000.00	Ministry of Agriculture
irrcanal	Canal Irrigated area ('000 ha)	2178.10	0	17995.00	Ministry of Agriculture
irrtank	Tank Irrigated area ('000 ha)	312.70	0	3343.00	Ministry of Agriculture
K	Potassic fertilizers ('000 tonnes)	175.45	0.02	3632.40	Fertiliser Association of India
labhoursha	Labour (hours/ha) wtd avg	568.69	211.66	1691.17	Ministry of Agriculture, Cost of Cultivation Studies
machinersperha	Machine (Rs./ha)	1417.22	0	6028.95	Ministry of Agriculture, Cost of Cultivation Studies
milk_prod	Production (in '000 MT)	2766.42	1	21031.00	Ministry of Agriculture, Agricultural Statistics at a Glance
N	Nitrogenous fertilizers ('000 tonnes)	1092.02	0.6	17300.25	Fertiliser Association of India
Nsa	Net Sown Area ('000 ha)	8631.22	1	142960.00	Ministry of Agriculture
output_byproduct	byproduct: Value of Output (Rs. Lakhs)	176028.30	0	3222156.00	National Accounts Statistics
output_cereals	Cereals: Value of Output (Rs. Lakhs)	810692.80	0	16300000.00	National Accounts Statistics
output_drugs	drugs: Value of Output (Rs. Lakhs)	81793.53	0	1434137.00	National Accounts Statistics
output_fibres	fibres: Value of Output (Rs. Lakhs)	94783.26	0	2756026.00	National Accounts Statistics
output_fish	fish: Value of Output (Rs. Lakhs)	183344.90	19	3906563.00	National Accounts Statistics
output_fruits	fruits: Value of Output (Rs. Lakhs)	607584.60	0	13800000.00	National Accounts Statistics



Variable name	Variable label (units)	Mean	Min	Max	Source
output_livestock	livestock: Value of Output (Rs. Lakhs)	924819.20	479	21200000.00	National Accounts Statistics
output_oilseeds	oilseeds: Value of Output (Rs. Lakhs)	257429.60	0	5449477.00	National Accounts Statistics
output_othercrops	othercrops: Value of Output (Rs. Lakhs)	140840.20	0	3097888.00	National Accounts Statistics
output_pulses	Pulses: Value of Output (Rs. Lakhs)	115964.70	0	2315486.00	National Accounts Statistics
output_spices	spices: Value of Output (Rs. Lakhs)	79445.64	0	1838363.00	National Accounts Statistics
output_sugar	sugar: Value of Output (Rs. Lakhs)	206510.30	0	3665781.00	National Accounts Statistics
P	Phosphatic fertilizers ('000 tonnes)	429.72	0.38	8049.70	Fertiliser Association of India
pcsdpcurrent	Per capita State Domestic Product	144345.00	3037	47200000.00	National Accounts Statistics
Pcvillageselectric	Percentage of villages electrified	85.16	0	285.87	Central Electricity Authority EPWRF time series
pesticide	Pesticide Technical Grade Consumption (MT)	2998.05	0.39	63651.00	Fertiliser Association of India
pfertpest	Price Index for Fertilisers and Pesticides	100.50	70.42	148.50	RBI
pfodder	Price Index for Fodder	114.77	63.17	245.64	RBI
pfoodarticles	Price Index for Food Articles	121.15	67.9	215.20	RBI
pfuelpower	Price Index for Fuel and Power	120.95	66.1	195.53	RBI
ptractor	Price Index for Tractors	101.75	65.54	144.21	RBI
pumpset	Pump sets energized	835496.10	0	16300000.00	Central Electricity Authority
ragrialliedtotal	total ragriallied	132352.00	415	4339185.00	State Finances : A Study of Budgets, RBI
rainavgann	Rainfall Annual (mm)	995.41	0	2630.00	Ministry of Agriculture
Seeds	Certified seeds distributed (lakh quintals)	132.78	62.2	283.85	Fertiliser Association of India
Total	Total Disbursement (in Rs. lakh)	824263.20	0	46700000.00	DEAR, NABARD
Tractor sale	Sale of Tractors	28179.76	36	545109.00	Agricultural research data book IASRI
Tractor stock	Stock of Tractors	312343.40	4629	4547080.00	CMIE
Unskilled labourers	Wage Index for unskilled labourers	85.46	32.33	393.82	RBI
villelectric	Percentage of villages electrified	85.16	0	285.87	EPWRF time series
wpi_all_avg	Wholesale Price Index (Financial) Year averages)	102.51	63.58	152.33	RBI
wpi_allcalavg	Wholesale Price Index (Calendar Year averages)	97.05	58.28	164.93	RBI

Observation with missing values are excluded from the regression.

## APPENDIX 4 : Regression Results for SURE Model 3.

Variables (in deviation, log form)	Fertilizers			Pesticides		
	Both	Phase 1	Phase 2	Both	Phase 1	Phase 2
	Phases b/t	b/t	b/t	Phases b/t	b/t	b/t
Credit	0.169 (1.88)	0.326* (2.03)	0.058 (0.51)	0.510** (2.69)	0.827 (1.54)	0.263 (1.30)
"Error" from Control function	0.003 (0.05)	0.025 (0.11)	-0.103 (-0.86)	0.077 (0.46)	-0.035 (-0.05)	0.530 (1.58)
Net Sown Area	0.632* (2.01)	0.441 (0.88)	0.255 (0.50)	1.261 (1.39)	0.762 (0.57)	0.288 (0.22)
Area under non-food Crops	0.000 (1.04)	0.000 (0.25)	0.000 (1.24)	-0.000 (-0.36)	0.000 (1.51)	-0.000 (-1.50)
Fertilizer Sale points	0.000 (0.73)	0.000 (1.30)	0.000 (0.27)	0.000 (0.15)	0.000 (0.93)	-0.000 (-0.50)
Index of Fertilizer/Pesticide prices	-0.002 (-0.58)	0.036* (1.96)	0.021 (1.14)	-0.011 (-0.80)	-0.006 (-0.09)	-0.069 (-1.47)
Wholesale Price Index	-0.002 (-0.46)	0.015 (0.92)	0.002 (0.15)	-0.026* (-2.00)	-0.079 (-1.17)	-0.008 (-0.28)
Lagged Food Articles Price Index	0.006** (2.74)	-0.074 (-1.83)	-0.001 (-0.13)	0.016* (2.32)	0.068 (0.45)	0.018 (0.80)
<b>(LAGGED) SHARE OF TOTAL VALUE OF AGRICULTURAL OUTPUT</b>						
Fibres	0.003*** (3.71)	0.002 (1.52)	0.002* (2.06)	-0.002 (-0.73)	-0.002 (-0.36)	-0.002 (-0.66)
Spices	-0.000 (-0.09)	-0.001 (-0.53)	0.000 (0.23)	0.001 (0.21)	0.008 (0.75)	-0.004 (-0.69)
Cereals	0.000 (0.69)	0.001 (1.06)	-0.000 (-0.27)	-0.001 (-0.67)	-0.002 (-0.64)	0.001 (0.47)
Fruits	-0.000 (-0.04)	-0.000 (-0.28)	0.000 (0.12)	0.000 (0.03)	-0.001 (-0.34)	0.000 (0.14)
Oilseeds	0.000 (0.53)	-0.000 (-0.23)	0.000 (0.49)	0.001 (0.42)	0.003 (0.58)	-0.004 (-1.21)
Pulses	0.001 (0.72)	-0.000 (-0.03)	0.000 (0.06)	-0.000 (-0.17)	-0.001 (-0.27)	-0.007 (-1.28)
Sugar	-0.000 (-0.37)	0.000 (0.03)	-0.000 (-0.01)	-0.001 (-0.53)	0.001 (0.25)	-0.001 (-0.21)
Per Capita State Domestic Product	-0.000 (-0.32)	-0.000 (-0.46)	0.000 (0.36)	-0.000 (-0.07)	0.000 (0.19)	-0.000 (-0.39)
Annual Average Rainfall	0.016 (0.36)	0.024 (0.26)	0.004 (0.06)	-0.165 (-1.09)	-0.041 (-0.09)	0.078 (0.32)
Constant	-0.182 (-0.49)	2.855 (1.92)	-2.394 (-1.38)	2.154* (1.98)	1.419 (0.27)	6.199 (1.60)

*b* refers to coefficient and *t* refers to *t* value (in parenthesis)

## APPENDIX 4 (Continued)

Variables (in deviation, log form)	Animal hours per ha			Machine expenses per hectare			Labour hours per hectare		
	Both			Both			Both		
	Phases b/t	Phase 1 b/t	Phase 2 b/t	Phases b/t	Phase 1 b/t	Phase 2 b/t	Phases b/t	Phase 1 b/t	Phase 2 b/t
Credit	0.176 (0.83)	-0.070 (-0.21)	-0.038 (-0.09)	-0.671* (-2.02)	-1.125 (-1.34)	-0.172 (-0.77)	-0.200* (-2.36)	-0.282 (-1.47)	-0.157 (-1.07)
"Error" from Control function	0.147 (0.62)	0.090 (0.19)	0.231 (0.46)	-0.633 (-0.94)	-0.062 (-0.05)	-0.297 (-1.09)	-0.078 (-1.01)	-0.052 (-0.21)	0.036 (0.24)
Net Sown Area	0.865 (1.46)	0.249 (0.26)	2.563 (1.45)	0.679 (1.72)	2.608 (1.06)	-0.259 (-0.22)	0.252 (1.15)	0.442 (0.87)	-0.116 (-0.18)
Area under non-food Crops	0.000 (0.82)	-0.000 (-0.68)	0.000 (0.31)	-0.000 (-0.05)	0.000 (0.47)	-0.000 (-0.43)	0.000 (0.54)	-0.000 (-0.70)	0.000 (0.53)
Fertilizer Sale points	0.000 (0.68)	0.000 (0.64)	0.000 (0.34)	-0.000 (-0.65)	-0.000 (-1.40)	0.000 (0.59)	-0.000 (-1.67)	-0.000 (-0.83)	-0.000 (-1.11)
Index of Fertilizer/Pesticide prices	-0.020 (-1.19)	-0.041 (-0.79)	0.048 (0.58)	0.032 (1.82)	0.021 (0.20)	0.030 (0.74)	-0.007 (-1.44)	-0.014 (-0.53)	0.012 (0.46)
Wholesale Price Index	0.007 (0.52)	-0.020 (-0.55)	0.045 (0.97)	0.056* (2.43)	0.072 (0.76)	-0.005 (-0.25)	0.011* (2.03)	0.005 (0.31)	0.019 (1.18)
Lagged Food Articles Price Index	-0.007 (-0.93)	0.053 (0.51)	-0.036 (-1.12)	-0.030** (-2.96)	0.015 (0.07)	0.004 (0.28)	-0.001 (-0.30)	0.019 (0.41)	-0.012 (-1.20)
<b>(LAGGED) SHARE OF TOTAL VALUE OF AGRICULTURAL OUTPUT</b>									
Fibres	0.001 (0.43)	-0.003 (-0.75)	0.000 (0.01)	-0.003 (-1.34)	-0.004 (-0.47)	0.001 (0.38)	0.002* (2.17)	-0.000 (-0.11)	0.005*** (3.98)
Spices	0.001 (0.23)	-0.006 (-1.05)	0.007 (0.63)	-0.013 (-1.31)	-0.028 (-1.20)	-0.002 (-0.47)	-0.002 (-1.27)	-0.004 (-1.32)	0.001 (0.18)
Cereals	0.003* (2.46)	0.002 (1.01)	0.006 (1.85)	0.002 (1.24)	0.008 (1.77)	-0.002 (-1.25)	0.001* (2.19)	0.001 (0.92)	0.002* (2.13)
Fruits	0.002 (1.31)	0.001 (0.45)	0.004 (0.98)	-0.002 (-0.88)	0.001 (0.29)	-0.003 (-1.12)	0.001 (1.15)	0.000 (0.35)	0.001 (0.75)
Oilseeds	-0.000 (-0.08)	0.002 (0.75)	-0.004 (-0.80)	0.001 (0.54)	-0.000 (-0.01)	0.002 (0.75)	0.001 (0.85)	0.001 (0.67)	0.000 (0.19)
Pulses	-0.004 (-1.26)	-0.002 (-0.50)	-0.009 (-1.15)	0.006 (1.79)	0.009 (1.12)	0.003 (0.69)	-0.003*** (-3.41)	-0.002 (-1.01)	-0.003 (-1.16)
Sugar	0.003 (1.09)	-0.000 (-0.02)	0.009 (1.81)	0.000 (0.15)	-0.004 (-0.41)	-0.002 (-0.67)	0.001 (1.33)	-0.000 (-0.04)	0.002 (1.03)
Per Capita State Domestic Product	-0.000 (-1.21)	0.000 (0.75)	-0.000* (-2.06)	-0.000 (-0.46)	-0.000 (-0.86)	0.000 (0.64)	-0.000 (-0.98)	-0.000 (-0.33)	-0.000 (-0.75)
Annual Average Rainfall	-0.153 (-0.70)	-0.104 (-0.49)	-0.039 (-1.10)	-0.108 (-0.49)	-0.518 (-0.68)	-0.135 (-0.84)	0.110 (1.41)	0.182 (1.02)	0.056 (0.57)
Constant	1.847 (1.33)	0.421 (0.12)	-6.334 (-0.95)	-6.280** (-3.23)	-11.712 (-1.72)	-2.720 (-0.84)	-0.363 (-0.74)	-1.401 (-0.87)	-2.127 (-1.04)

*b* refers to coefficient and *t* refers to *t*-value (in parenthesis)

**APPENDIX TABLE 4 (Continued)**

Variables (in deviation, log form)	Tractor sale			Pump set		
	Both Phases b/t	Phase 1 b/t	Phase 2 b/t	Both Phases b/t	Phase 1 b/t	Phase 2 b/t
Credit	1.079*** (3.32)	0.096 (0.18)	1.671** (3.11)	-0.842 (-1.52)	0.038 (0.03)	-0.832 (-0.82)
"Error" from Control function	-0.025 (-0.07)	0.347 (0.45)	0.040 (0.08)	-0.067 (-0.08)	-1.084 (-0.62)	-0.557 (-0.48)
Net Sown Area	-0.094 (-0.13)	0.297 (0.20)	0.562 (0.26)	0.778 (0.38)	-1.698 (-0.56)	5.586 (1.04)
Area under non-food Crops	0.000 (0.72)	-0.000 (-0.62)	0.000 (0.92)	-0.000 (-0.36)	-0.000 (-0.37)	-0.000 (-0.23)
Index of Fertilizer/Pesticide prices				0.048 (0.83)	0.456 (1.58)	0.009 (0.05)
Wholesale Price Index	-0.054** (-2.85)	-0.013 (-0.09)	-0.000 (-0.00)	0.007 (0.15)	-0.477 (-1.74)	0.041 (0.18)
Lagged Food Articles Price Index	0.012 (1.33)	-0.129 (-0.70)	0.040 (0.60)	-0.029 (-1.13)	0.310 (0.79)	-0.040 (-0.31)
Tractor price index	-0.007 (-0.33)	0.133 (0.92)	-0.109 (-1.74)			
Unskilled workers wage index	0.005 (1.02)	0.013 (0.89)	0.004 (0.31)	-0.002 (-0.16)	0.025 (0.76)	-0.010 (-0.37)
Fuel and Power price index	0.004 (1.56)	0.010 (0.94)	-0.055 (-0.87)	-0.001 (-0.16)	-0.076 (-1.91)	0.007 (0.09)
<b>(LAGGED) SHARE OF TOTAL VALUE OF AGRICULTURAL OUTPUT</b>						
Fibres	-0.002 (-0.59)	-0.002 (-0.30)	-0.004 (-0.59)	-0.002 (-0.44)	0.004 (0.40)	-0.005 (-0.38)
Spices	0.009 (1.51)	0.013 (1.03)	0.004 (0.32)	-0.009 (-0.51)	-0.003 (-0.14)	-0.016 (-0.48)
Cereals	-0.001 (-1.01)	-0.002 (-0.69)	-0.003 (-0.82)	-0.001 (-0.23)	0.001 (0.16)	-0.003 (-0.47)
Fruits	0.000 (0.21)	0.003 (1.11)	-0.003 (-0.72)	-0.003 (-0.76)	-0.007 (-0.84)	-0.000 (-0.00)
Oilseeds	0.001 (0.66)	-0.000 (-0.10)	-0.003 (-0.66)	-0.001 (-0.32)	-0.002 (-0.44)	0.001 (0.05)
Pulses	0.004 (1.45)	0.005 (0.74)	-0.000 (-0.02)	-0.008 (-1.17)	-0.002 (-0.20)	-0.005 (-0.22)
Sugar	-0.008* (-2.54)	-0.009 (-1.24)	-0.012 (-1.87)	0.015* (2.39)	0.015 (1.18)	0.017 (1.31)
Per Capita State Domestic Product	0.000* (2.02)	0.000 (0.08)	0.000 (1.18)	0.000** (3.03)	0.000* (2.03)	0.000 (1.32)
Annual Average Rainfall	0.226 (1.21)	0.195 (0.39)	-0.217 (-0.45)	-0.393 (-0.95)	0.529 (0.63)	-0.484 (-0.64)
Constant	4.835* (2.54)	1.170 (0.11)	12.919* (2.17)	-1.789 (-0.48)	-20.078 (-1.19)	-1.878 (-0.12)

## APPENDIX 5: Results for Agricultural GDP as part of SURE Model 3

Variable (in log deviation form)	Both Phases b/t	Phase 1 b/t	Phase 2 b/t
Credit	0.083 (1.00)	-0.095 (-0.39)	0.133 (0.77)
"Error" from Control Function	-0.028 (-0.42)	-0.130 (-0.37)	-0.042 (-0.37)
Milk production	0.000 (0.52)	0.000 (0.95)	-0.000 (-0.18)
Egg production	0.000 (1.43)	0.000 (0.47)	0.000 (0.10)
Gross cropped area	0.193 (0.92)	0.186 (0.44)	-0.124 (-0.18)
Land irrigated by canals	0.010 (0.41)	0.044 (0.65)	-0.017 (-0.21)
Land irrigated by tanks	0.011 (0.36)	0.002 (0.03)	0.030 (0.32)
Area under Non-food crops	-0.000 (-0.63)	-0.000 (-0.07)	0.000 (0.11)
Pesticide	0.010 (0.31)	0.032 (0.32)	-0.045 (-0.43)
Fertilizers (N, P and K)	0.492** (2.82)	0.745* (2.42)	0.184 (0.66)
Tractors	-0.073 (-1.32)	-0.005 (-0.04)	-0.101 (-0.69)
Pump sets	-0.210 (-1.16)	0.033 (0.07)	-0.074 (-0.18)
Labour hours per hectare	0.265** (3.12)	0.216 (0.99)	0.350 (1.95)
Animal hours per hectare	-0.040 (-1.20)	-0.043 (-0.32)	-0.017 (-0.26)
Machine (Rs. Per hectare)	-0.001 (-0.02)	0.014 (0.14)	-0.003 (-0.02)
Lagged unskilled wage index	0.001 (0.96)	-0.000 (-0.09)	0.002 (0.49)
Average Annual Rainfall	-0.016 (-0.33)	-0.032 (-0.24)	-0.025 (-0.26)
Lagged Fertilizer and Pesticide price index	0.020** (3.28)	0.071 (0.99)	0.161 (0.58)
Lagged Fodder price index	0.002 (1.42)	0.003 (1.23)	-0.019 (-0.52)
Lagged tractor price index	-0.006 (-0.74)	-0.019 (-0.56)	0.011 (0.24)
Lagged Fuel and power price index	-0.003** (-2.69)	-0.012 (-0.77)	-0.011 (-0.58)

**APPENDIX 5: Results for Agricultural GDP as part of SURE Model 3  
(Continued)**

<b>Variable (in log deviation form)</b>	<b>Both Phases b/t</b>	<b>Phase 1 b/t</b>	<b>Phase 2 b/t</b>
Wholesale Price Index	-0.006 (-0.89)	-0.015 (-0.55)	-0.028 (-0.50)
Capital expenditure on economic services	-0.009 (-0.80)	-0.019 (-0.64)	-0.005 (-0.25)
Capital expenditure on Agriculture and allied services	0.000 (0.06)	-0.001 (-0.14)	0.001 (0.06)
Revenue expenditure on agriculture and allied services	0.076 (0.87)	-0.052 (-0.31)	0.056 (0.49)
Percentage of villages electrified	-0.000 (-0.03)	0.008 (0.78)	-0.002 (-0.34)
Constant	-0.105 (-0.80)	0.000 (.)	-0.488 (-0.37)
N	121.00	59.00	62.00
R-squared	0.74	0.47	0.69
BIC	603.77	411.02	324.76
AIC	170.42	91.08	-4.948

*b refers to coefficient and t refers to t-value (in parenthesis)*

## APPENDIX 6: Regional distribution of agriculture credit and real sector indicators

Regions	Flow of agriculture credit		Real Sector Indicators				Distribution of Rural and semi urban branches of Commercial Banks(%)
	Av. Share of agri. credit during 10th Plan Period	Av. Share of agri. credit during 11th Plan Period	Share in GCA	Share in GIA	Cropping Intensity	Av. Share in Food Grain production#	
Northern	28.69	26.01	20.11	26.32	148	26.58	16.62
North Eastern	0.38	0.62	2.83	0.68	128	2.02	3.16
Eastern	6.67	7.54	14.65	15.25	151	16.37	17.99
Central	15.1	12.58	27.26	31.66	139	30.55	21.51
Western	14.17	13.33	16.47	9.74	114	8.31	12.98
Southern	34.99	39.92	18.68	16.35	124	16.17	27.74
Total	100	100	100	100		100	100

Note: (a) # denotes average share for the period 2008-09 to 2012-13.

(b) GCA- Gross Cropped Area, GIA- Gross irrigated Area. GCA and GIA are averages for the period 2007-08 to 2011-12.

(c) Distribution of branches calculated from Statistical Tables Relating to Banks in India, RBI

Source: Calculated based on data from MOA, RBI, IBA and NABARD